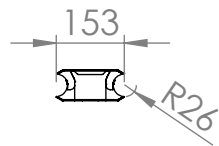


These are pressed and formed parts
Do not nest or cut

BOM Table			
NO	Part Number	Description	QTY.
1	Ass--20001701	AVM30 Complete 30cm Mast Unit	5
2	Ass--20001837	AVM15 Complete	1



Description		Floor to wall twin 2m column FWAVM	
UNLESS OTHERWISE SPECIFIED: DIMENSIONS ARE IN MILLIMETERS	Saved Date: 22 October 2024	DRW - REV REV - A-001	See Below - Special Notes
	Created Date: 22 October 2024		
SURFACE FINISH: Powder Coated	Bend Tool:	Material:	Part Number & Part Revision
	Created By Dennis Neale		
Unicol Engineering Green Road Oxford OX3 8EU	Gauge:	ASS--20053598 REV - A-001	