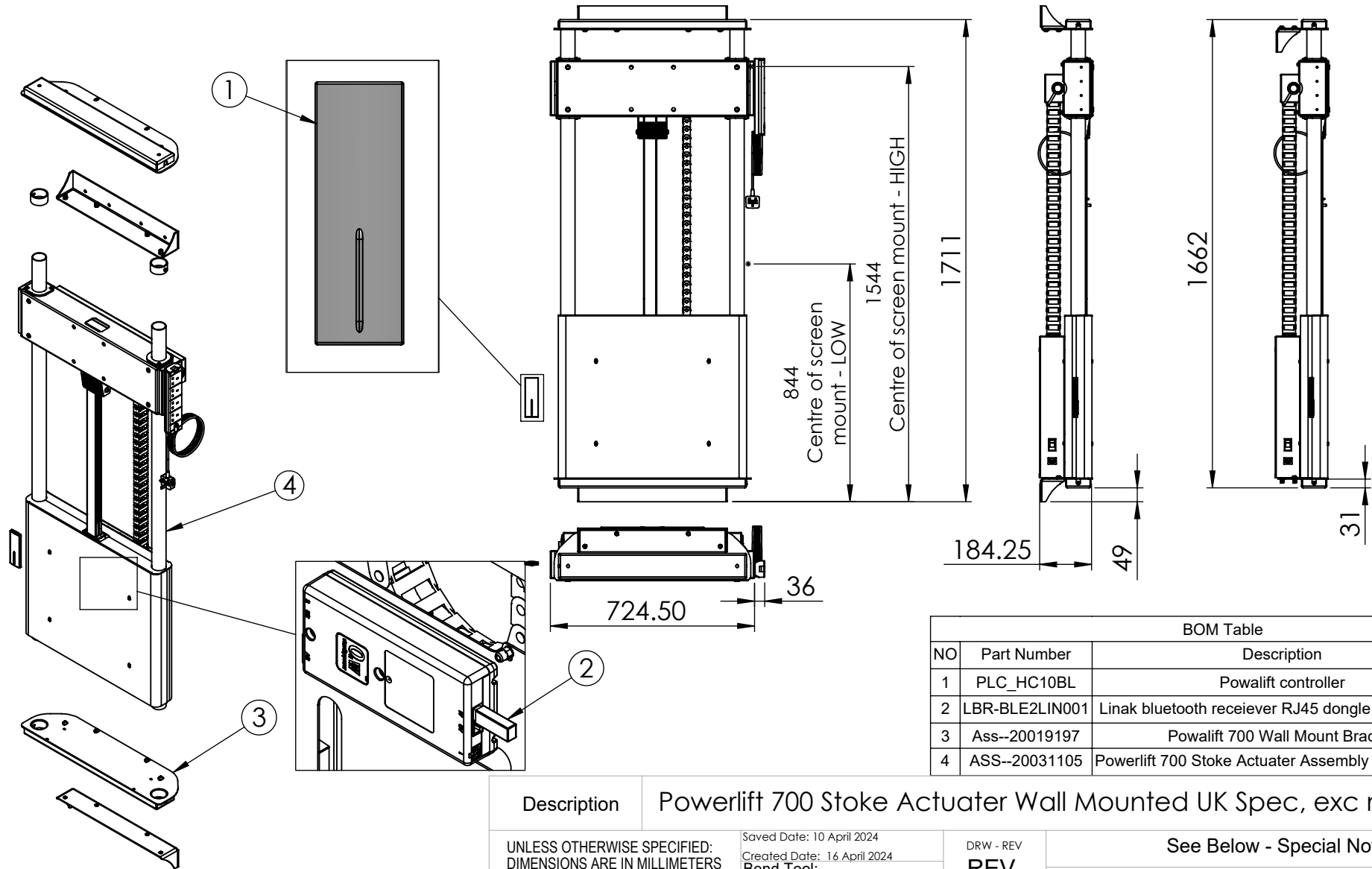


Screwed to wall  
top and bottom

Screwed to floor at  
bottom and wall at top



BOM Table			
NO	Part Number	Description	QTY.
1	PLC_HC10BL	Powalift controller	1
2	LBR-BLE2LIN001	Linak bluetooth receiver RJ45 dongle BLE2LIN001	1
3	Ass--20019197	Powalift 700 Wall Mount Bracket	2
4	ASS--20031105	Powerlift 700 Stoke Actuator Assembly - UK Electrics	1

Description Powerlift 700 Stoke Actuator Wall Mounted UK Spec, exc mount

UNLESS OTHERWISE SPECIFIED:  
DIMENSIONS ARE IN MILLIMETERS

SURFACE FINISH: Powder Coated

Created By System  
Administrator,  
Unicol Engineering  
Green Road  
Oxford OX3 8EU

Saved Date: 10 April 2024  
Created Date: 16 April 2024  
Bend Tool:

Material:

Gauge:

DRW - REV  
**REV -  
A-006**

See Below - Special Notes

Part Number & Part Revision

**Ass--20019143 REV - A-006**

WEIGHT: 80.22

Kg

SCALE:1:20

DO NOT SCALE DRAWING

SHEET 1 OF 1