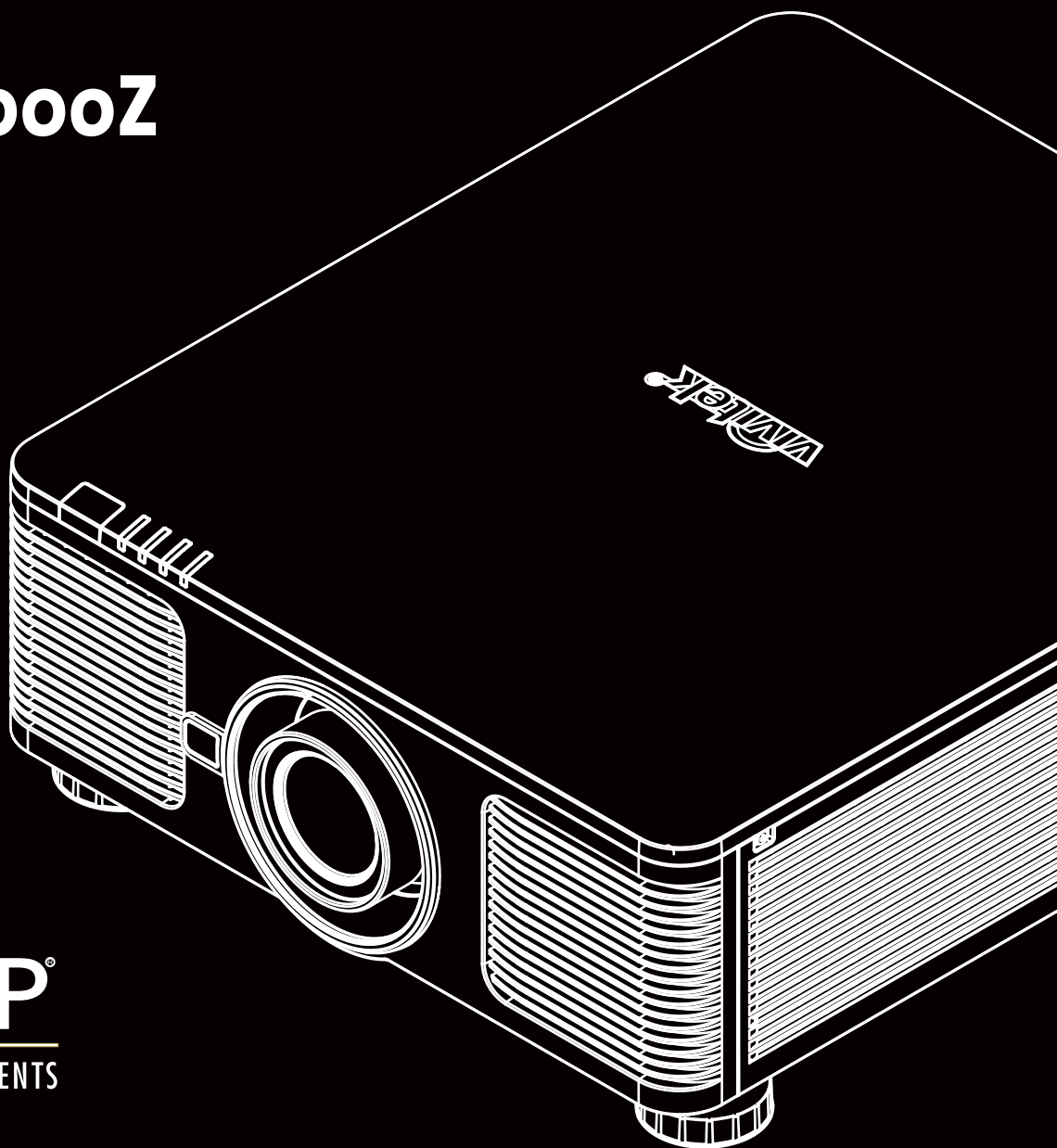




User's Manual

DK10000Z



Index

Copyright	4	I/O - Connecting	30
Copyright	4	HDBaseT/LAN	30
Disclaimer	4	Ethernet	31
About the Manual	4	Trigger	31
Important Safety Guidelines	5	RS-232	31
Safety Notification	5	Wired Remote	32
WARNING TO CALIFORNIA RESIDENTS:	5	HDMI 1 / 2	32
NOTIFICATION (CANADA)	5	DisplayPort	33
CE NOTIFICATION	5	SDI IN / OUT	33
FCC NOTIFICATION	5	Using the projector	34
LIGHT MODULE	6	Using On-Screen Display	34
LASER SAFETY NOTIFICATION AND CAUTION	6	Using the OSD Menu	34
Laser Parameters	6	Navigating the OSD	34
Product Label	6	Menu Tree	35
Hazard Warning Symbol and Aperture Label	6	INPUT	35
Installation and Use Notices	7	PICTURE	35
Disposal of Old Electric and Electronic Equipment	7	ALIGNMENT	36
Important Recycling Instructions	7	CONTROL	37
Introduction	8	SERVICE	37
Packing Checklist	8	OSD Menu – INPUT	38
Projector Overview	9	Input Selection	38
Front-right View	9	PIP	38
Rear-right View	9	Position	39
Bottom View	10	Auto Source	39
IO Panel	11	Color Space	39
Control Panel	12	Aspect Ratio	39
Remote Control	13	Overscan	39
Remote Control Operating Range	14	Test Pattern	40
Installation and Setting up	15	Auto Sync	40
Inserting or Changing the Remote Control Batteries	15	OSD Menu – PICTURE	41
Installing the projector	16	Picture Mode	41
Precautions for Installation	16	Brightness	41
Mounting the projector	17	Contrast	41
Installing or Removing the Optional Lens	18	Saturation	41
Install New Lens	18	Hue	41
Removing the Existing Lens	19	Sharpness	41
Selecting the Input Voltage of AC Power	20	Color Temperature	41
Connecting to AC Power Supply	20	Gamma	41
Turning on the Projector	20	HDR	42
Turning off the Projector	21	Input Balance	42
Setting up the installation condition	22	HSG	42
Setting up the Projection Mode	22	Noise Reduction	42
Adjusting Projected Image Position	23	Dynamic Black	42
Adjusting the Focus and Zoom	23	Light Off Timer	42
Preventing the Unauthorized Use of the Projector	24	Smooth Picture	42
Using the Control Panel Lock	24	OSG Menu – ALIGNMENT	43
Locking the control buttons	24	Lens	43
Unlocking the control panel	25	Digital Zoom	45
Using Security Lock	25	Blanking	45
Enable the Security Lock	25	Keystone	45
Unlocking the projector	26	4 Corners	45
Using Control ID for Multi-projector Application	27	Rotation	45
Step1: Set the Projector identification number	27	Pincushion / Barrel	45
Step2: Set the identification number of remote control	28	Arc	46
Erase the identification number of the remote control	28	Edge Blend	46
Checking the identification number of the projector and remote control	29	Screen Format	46

OSD Menu – CONTROL	47
Language	47
Projection Mode	47
High Altitude	47
Standby Mode	48
Auto Power Off	48
Auto Power On	48
Network	48
Light Power	49
Background	49
Startup Logo	49
Infrared Remote	49
Trigger	50
OSD Settings	50
HDMI Equalizer	50
Image Latency	50
OSD Menu – SERVICE	51
Model	51
Serial Number	51
Software Version 1 / Software Version 2 / Software Version 3	51
Control/Remote ID	51
Active Source	51
Signal Format	51
H/V Refresh Rate	51
Pixel Clock	51
Light Time	51
Constant Brightness	51
Thermal Status	51
Factory Reset	51
Additional Information	52
Product Specification	52
Supported Signal Input Timing	53
2D formats	53
3G-SDI Format	55
Configurations of Terminals	56
HDMI(19 pin Type A)	56
Serial Control Terminal	
(RS-232, D-sub 9 pin)	56
Screen Trigger	56
Wired Remote	56
HDBaseT/LAN Terminal	56
DisplayPort	56
Lens Series	57
Product Dimensions	58
LED Indication	59
Power LED	59
Status LED	59
Light Source LED	59
Temp LED	59
Tips for Troubleshooting	60
Image Problems	60
Projection Problems	61
Remote Control Problems	61
Projection Lens Problems	61
Remote communication Problems	61
Having the Projector Serviced	61
About the Vivitek Support	62
North America	62
Europe and Africa	62
China	62
Asia and Taiwan	62

Copyright

Copyright

The User's Manual (including all pictures, illustrations and software) is protected by the international copyright right law. All rights are reserved. No duplication of the manual or any content included in the manual is allowed without the written consent of the manufacturer.

Vivitek is the trademark of Vivitek Corporation. ©All rights reserved. 2019.

Disclaimer

The information in the manual is subject to change without notice. The manufacturer does not provide any statement or warranty of the contents in the manual and clearly give up the implied warranties of merchantability and of fitness for a particular purpose. The manufacturer reserves the rights to modify the publication and change the contents of the materials at any time without notice to any person.

About the Manual

The manual describes how to install and use the projector and is applicable to the end-user. Relevant information (such as illustrations and descriptions) is put on the same page as possible as we can. The format, easy for printing, is convenient for reading and paper-saving which is beneficial to environmental protection. It is suggested printing the page you need.

Important Safety Guidelines

Thank you for purchasing this product!

Read the Manual carefully to obtain the best performance. The Manual provides instructions to use the menu and implement operation.

Safety Notification



CAUTION

Suggest when turn off main power, also unplug the power cord from power outlet.



CAUTION

To prevent electric shock, do not open the cabinet. There are high-voltage components inside.

Refer service to qualified service personnel.



CAUTION

The symbol warns the user about electric shock caused by voltage not insulated. Therefore, it is dangerous to make any kind of contact with any parts of inside units.



To prevent the projector from electrical discharge or electric shock, do not expose the projector to rain or moist environment. Do not use the plug with an extension cord or an outlet unless all the prongs can be fully inserted.



This symbol alerts the user that important information which should be read carefully to avoid problems concerning the operation and maintenance.

WARNING TO CALIFORNIA RESIDENTS:

Handling the cables supplied with this equipment might expose user to a little lead, a chemical known to the State of California, resulting in risks of barrenness. Please remember to wash hands after handling.

NOTIFICATION (CANADA)

This Class A digital equipment complies with Canadian ICES-003.

CE NOTIFICATION

This is a Class A product, which complies with rules for CE marking. This product may cause radio interference that the user may be supposed to take adequate measures.

FCC NOTIFICATION

This device complies with part 15 of the FCC Rules. Operation is subject to the following two conditions:

(1) This device may not cause harmful interference;

(2) This device must accept any interference received, including interference that may cause undesired operation. This equipment has been tested and found to comply with part 15 of the FCC Rules. These requirements are designed to provide reasonable protection against harmful interference when the equipment operates in a commercial environment. This equipment might generate radio frequency energy. If user does not install or use in accordance with the instructions in manual, the radio frequency energy may interfere radio reception. If the above scenario occurs, the user may be responsible to correcting the interference.



WARNING!

Changes or modifications without approval from Vivitek could void the user's authorization to operate the product.

LIGHT MODULE

- A light module containing multiple laser diodes acts as the light source in the product.
- These laser diodes are sealed in the light module. It is recommended to ask dealer for maintenance or repair services of the light module.
- End user is not allowed to replace the light module.
- Contact distributor who provides the qualified service for light module replacement and further information.

LASER SAFETY NOTIFICATION AND CAUTION



Do not stare at the lens while in use

- CLASS 3R LASER PRODUCT
- This Laser Product is designated as Class 3R during all procedures of operation.
- LASER LIGHT - AVOID DIRECT EYE EXPOSURE.
- Do not point laser or allow reflected laser light toward other people or reflective objects.
- Direct or scattered light can be hazardous to eyes and skin.
- There is a potential hazard of eye exposure to laser radiation if the included instructions are not followed.
- Caution – use of controls, adjustments or performance of procedures other than those specified herein may result in hazardous radiation exposure.

Laser Parameters

Wavelength	: 450nm - 460nm	Total internal power	: >100W
Mode of operation	: Pulsed, due to frame rate	Apparent source size	: >10mm, at lens stop
Pulse width	: 0.65ms	Divergence	: >100 mili Radian
Maximum laser energy	: 0.34mJ		

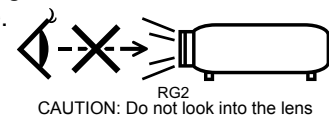
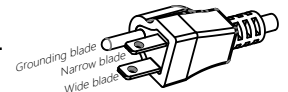
Product Label

Manufacturer’s ID Label, Explanatory Label and Certification Statement Label

Hazard Warning Symbol and Aperture Label

Installation and Use Notices

1. Read and keep this manual properly.
2. Pay attention to all the noted warnings, and follow all the guidelines and descriptions in this manual.
3. Do not use the projector near water.
4. Do not install the equipment near the thermal sources, such as heaters, radiators, furnace, amplifiers, and any other equipment that may generate heat.
5. Be careful while holding the equipment or moving the trolley with projector to prevent the equipment from turning over.
6. Notice whether there is any parts with flaws after receiving the projector.
7. Please notice that the projector will not power on until the lens is fitted. The protection covering the lens should be taken to install the lens.
8. Do not let any vent be obstructed.
9. Do not destroy the safety protection function of polarized or grounding plug of power cord.
A polarized plug has one wide and one narrow blade. The plug has two blades and one grounding blade. The wide blade or grounding blade is provided for the safety concerns. If the plug provided does not match the outlet, please contact the electrician to change outlet.
10. The +12V trigger only outputs 12V DC trigger signal. Do not connect other power input or output. Otherwise, the equipment may malfunction.
11. Adjust the slide switch with suitable volt input, and then plug in the projector; the red LED indicator would flash and then stabilize, getting into standby mode. User should only use the connectors or accessories provided by the manufacturer. Please refer to "Selecting the Input Voltage of AC Power" on page 20.
12. When user turns on the projector, the red LED indicator would flash until stabilize.
Do not look at the lens directly while the projector is running.
13. Install or use the projector, please do not look directly into the lens or the lens light output. The glare after focusing may cause damage to your eyes.
14. Unplug the power cord of the equipment if there is a thunderstorm or the equipment is not going to be used for a long time.
15. The packaging materials can be kept properly for transportation use afterwards.
16. If any breakdown occurs, please contact dealer or manufacture for qualified repair service.



Disposal of Old Electric and Electronic Equipment

The symbol on your product or the package represents that the product should not be treated as the normal household waste when discarded but should be carried to the recycling location of the waste electric and electronic equipment. The consequence on the environment and human health due to the incorrect disposal of the product can be prevented if it can be ensured that the product is properly discarded. Material recycling is helpful to the protection of natural resources. The symbol is only valid in European Union. If you want to discard electrical and electronic equipment, contact the governmental authorities or your dealer for the correct method of disposal.

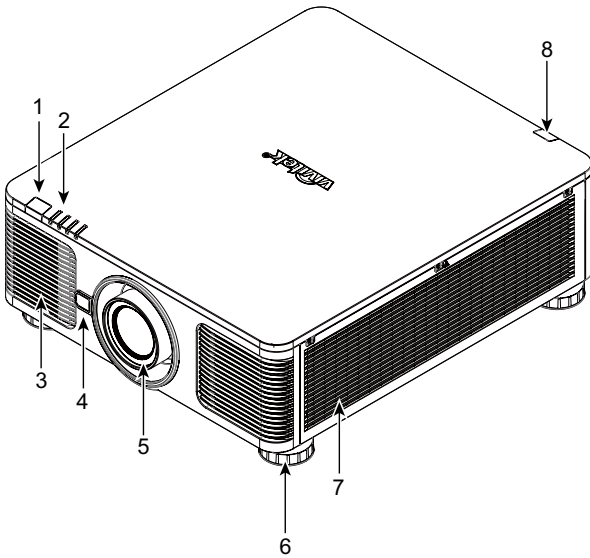



Important Recycling Instructions

The product may contain other electronic wastes and may pose risk if not discarded properly. Abide by the local, state/provincial or federal laws of recycling or discarding. For more information, please visit the website and contact Electronic Industries Alliance (EIA) on WWW.EIAE.ORG.

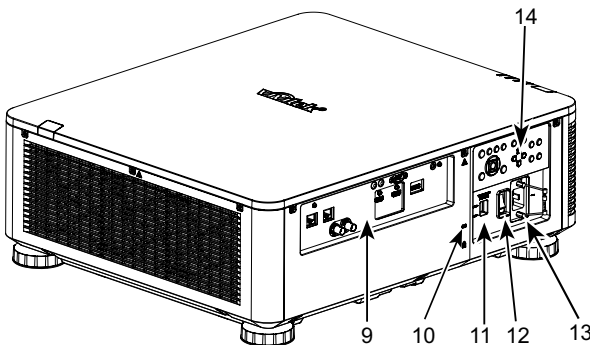
Projector Overview

Front-right View



1. **Front IR Receiver**
The Receiver for IR signals from remote control.
2. **LED Indicator**
Display current projector status such as power, light source status and warning.
3. **Air Intake**
The fan pulls the cool air to the projector for system cooling.
4. **Lens Release Button**
Press the Lens Release button before removing the lens.
5. **Lens hood**
Remove the cover before installing the lens.

6. **Height Adjuster**
Adjust level of projector
7. **Intake Vent**
The fans pull air to cool the radiator of the projector.
8. **Rear IR Receiver**
The Receiver for IR signals from remote control.

Rear-right View

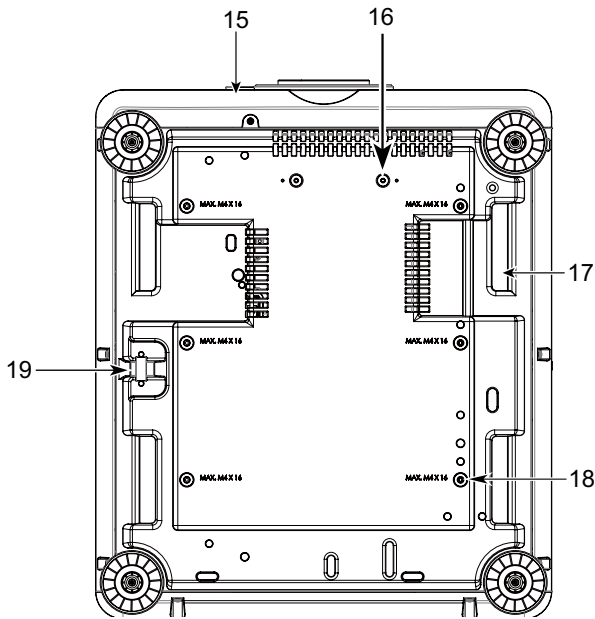


9. **I/O Connector Panel**
Connect to various input, control or output terminals to the projector. Refer to "IO Panel" on page11 "
10. **Kensington Lock**
Attach the projector to a permanent object with the Kensington slot and a security cable. (anti-theft function)
11. **Slide Switch**
Switch it to corresponding input voltage. Please refer to "Selecting the Input Voltage of AC Power" on page20 "
12. **AC Power Switch**
Turn on/off the AC power of the projector.
13. **AC Inlet**
Connect the supplied power cable to this inlet.
14. **Control Panel**
Press the button to operate the OSD menu or adjust the lens Settings see OSD controls. Refer to "Control Panel" on page12 "

Important

- The air passes through grill openings on the projector is for good air circulation. Do not obstruct any of the grill openings and keep the required distance from any object.
- The Kensington lock hole only provides connection to the Kensington cable. Please do not hang the projector or other objects with this Kensington hole.

Bottom View



- 15. **Anti-thief Screw hole**
The anti-thief screw can be fastened to prevent Lens removing by unauthorized person.
- 16. **Mounting Holes of Support Kit**
These two screws holes can be used to fix support kits of ultra-short throw lens.

Note

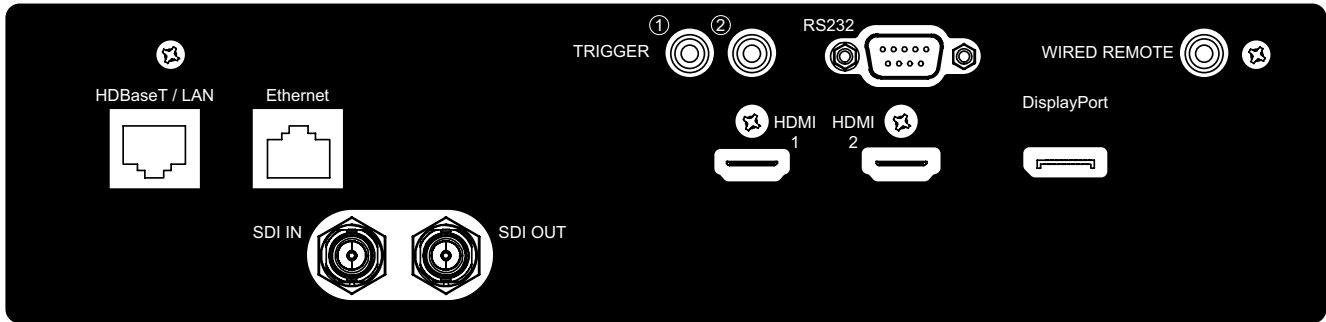
The screws are for Lens support kits only; over-loading may damage the projector or cause injury.

- 17. **Recess for projector handling.**
These four recesses can be used for handling the projector.
- 18. **Ceiling Mounting Hole**
Total 6 holes for M4 screw, maximum depth 14mm.
- 19. **Security Slot**
This hole can be locked with a safety chain after the ceiling mount installation is completed and provide Short-term protection

Note

- With ceiling installation, refer to "Mounting the projector on page17 " for detail information.
- The security slot only provides short-term safety protection after installation. Please do not use this hole to hang the projector to avoid falling or personal injury.

IO Panel



TRIGGER(12V +/-1.5V)

When connected to the screen through a 3.5mm cable, the screen deploys automatically on startup of the projector. The screen reacts when the projector is powered off.

RS-232

The 9-pin D-sub interface is used to connect to the PC control system and projector maintenance.

WIRED REMOTE

Connect the supplied remote controller to the projector

HDBaseT/LAN

Connect an Ethernet cable (Cat5e/Cat6, not supplied) from a computer, network device, or HDBaseT transmitter.

Ethernet

Connect an Ethernet cable (Cat5e/Cat6, not supplied) from a computer, network device not to support HDBaseT

HDMI 1 / HDMI 2

High Definition Multimedia Interface, connect the HDMI cable from a computer or video device

SDI IN/OUT

Connect to SDI source.

DisplayPort

Connect a video source to projector

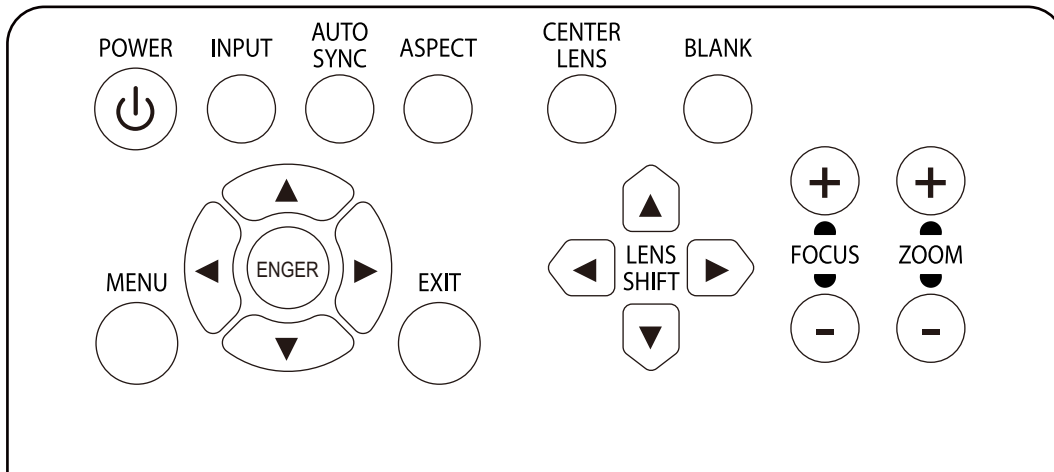
Note for Trigger

- When the projector is turned on, a control signal (DC 12V) outputs from this terminal.
- Do not use this jack for anything other than intended use.

Note for Wired Remote

- Please make sure whether the port for insertion is correct before the terminal of the wired remote control is inserted. The remote control may be damaged if inserted to the wrong port such as trigger. Do not use this jack for anything other than intended use.
- When the cable of the wired remote control is plugged into the projector, the projector will automatically switch to the wired control mode and turn off the wireless infrared receiving function. So before using the wireless infrared controller, make sure the cable of the wired remote is not plugged into the Wired Remote port.

Control Panel



POWER

User the button to turn on/off the projector.

INPUT

Push the button to select the input signal. HDMI, DVI, VGA, Component...etc.

AUTO SYNC

Implement automatic signal synchronization.

ASPECT

Change the aspect ratio of the current image and push the button to change to the next aspect ratio settings.

MENU

Push the button to display or hide the OSD menu.

UP/Down/Left/Right

Use the button to select the OSD option.

ENTER

Use the button to select settings or confirm the changed settings.

EXIT

Push the button to return to the menu on the previous level or exit the OSD menu.

CENTER LENS

Push the button to center the lens and calibrate the parameter of lens shift, focusing and zooming.

Note

The lens memory function requires the accurate lens adjustment parameter. Please center the lens every time after the lens is mounted.

Blank

Use the button to stop the projection temporarily

LENS SHIFT

Use these four buttons to move the projected image to desired position.

Note

If the projected screen is too different with the projected position by user setting, please move the projector or adjust the four adjustment feet of the projector to fix the approximate projection position. Then use Lens Shift this function to finely adjust the projection position.

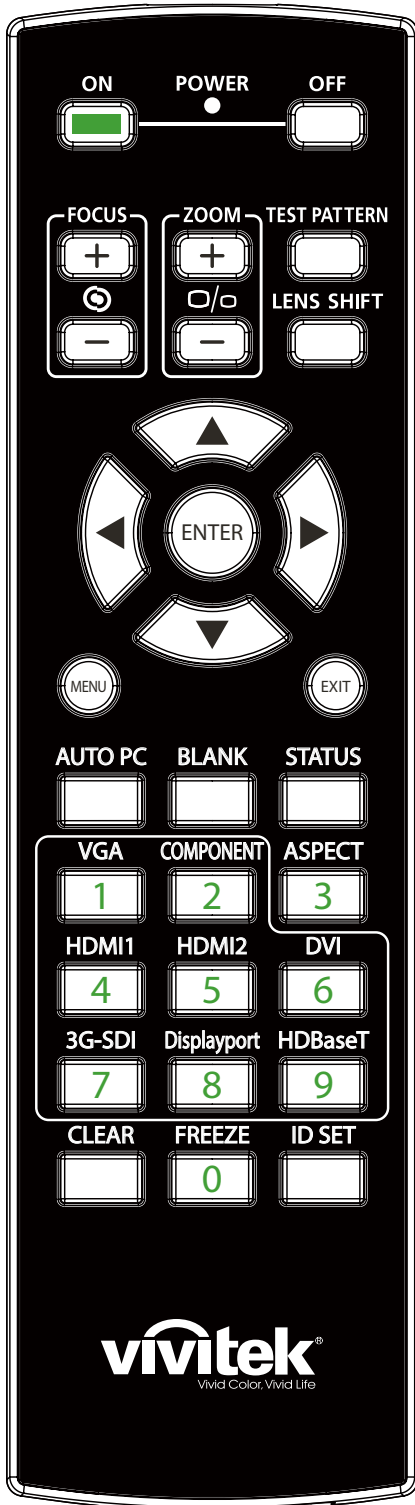
FOCUS

Use the button to adjust the focus of projected image.

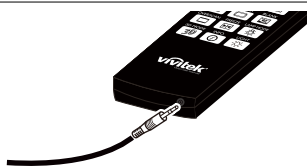
ZOOM

Use the button to zoom in/out the projected image.

Remote Control



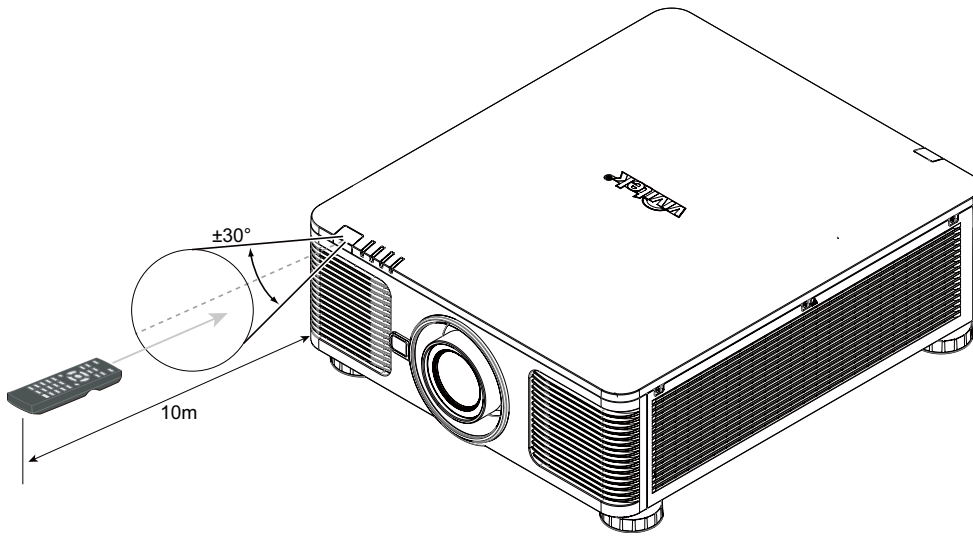
On	Use the button to turn on the projector.
OFF	Use the button to turn off the projector.
FOCUS	Adjust the focus of the projected image.
ZOOM	Zoom in/out the projected image.
TEST PATTERN	Use the button to show the test pattern. Press this button again to switch to the next pattern. Press the EXIT button to return to the projected image.
LENS SHIFT	Use the button to move the lens right or left.
ENTER	Use the button to select settings or confirm the changed settings.
MENU	Press the button to display or hide the OSD Menu.
EXIT	Press the button to return to the previous Menu or exit the OSD Menu.
AUTO PC	You can use this function to execute signal source auto synchronization
BLANK	Press the button to temporarily interrupt the projection.
STATUS	Show OSD MENU – SERVICE.
VGA	Select VGA input source. (not applicable for DK1000Z series)
COMPONENT	Select Component input source.
ASPECT	Press the button to display aspect ratio options.
HDMI1	Select HDMI 1 input source.
HDMI2	Select HDMI 2 input source.
DVI	Select DVI input source.
3G-SDI	Select 3G-SDI input source.
DisplayPort	Select DisplayPort input source.
HDBaseT	Select HDBaseT input source.
CLEAR	Erase the set ID number of the remote control; refer to "Erase the identification number of the remote control on page28 "
FREEZE	Freeze the projected image or resume the projection.
ID SET	Set up ID number for remote control; refer to "Using Control ID for Multi-projector Application on page27 "



Wired Remote Jack Connect to WIRED REMOTE terminal on the projector

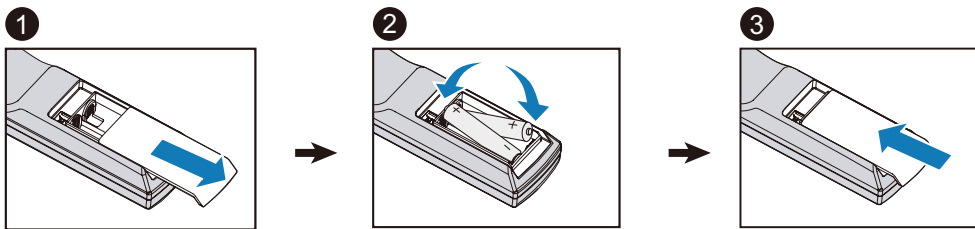
Remote Control Operating Range

The remote control uses infrared transmission to control the projector. It is not necessary to point the remote directly at the projector. Provided you are not holding the remote perpendicular to the sides or the rear of the projector, the remote will function well within a radius of about 10 meters (25 feet) and 15 degrees above or below the projector level. If the projector does not respond to the remote control, move a little closer.



Installation and Setting up

Inserting or Changing the Remote Control Batteries



1. Remove the battery compartment cover by sliding the cover in the direction of the arrow.
2. Place two AA batteries with the correct polarity.
3. Slide on the cover as the arrow in the illustration.

Important

- Avoid using the projector with bright fluorescent lighting turned on. Certain high-frequency fluorescent lights can disrupt remote control operation.
- Be sure nothing obstructs the path between the remote control and the projector.
- Do not expose the remote control to high temperature or humidity; otherwise, the remote control will not work functionally.

Battery installation instructions

- Make sure the battery is installed with the correct polarity.
- Do not use the old and new batteries or the batteries of different types together
- Remove the battery if the remote control may not be used for a long time to prevent the damage caused by leaks.

Installing the projector

The high quality display effect can be guaranteed only when the projector is correctly installed. Generally, the light source facing the screen should be reduced or eliminated as much as possible. The contrast of the image will be obviously reduced if the light directly shines on the screen, such as the beam from windows or the searchlight cast on the image. The image may become faded and not bright.

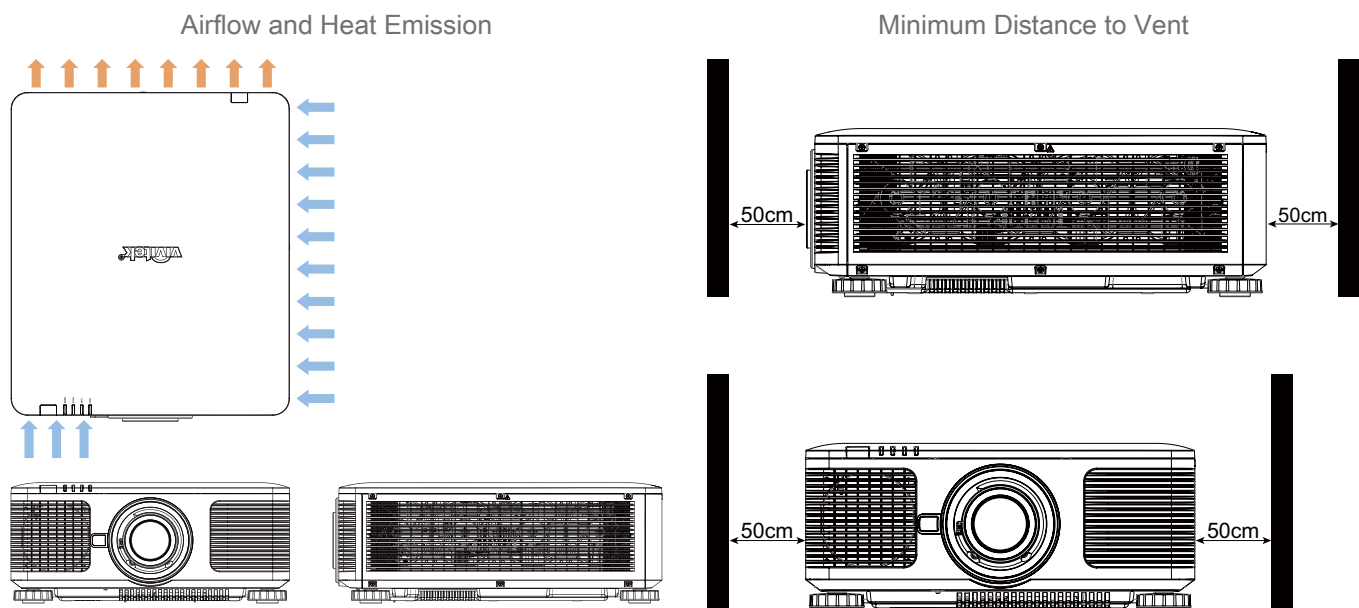
Precautions for Installation

Caution

- Projector installation must be done by a qualified professional. Contact your dealer for more information. It is not recommended you install the projector yourself.
- With ceiling installation, use approved mounting hardware & M4 screws; maximum depth of screw: 14 mm. Contact your dealer for information about mounting the projector on a ceiling.
- Only use the projector on a solid, level surface, serious injury and damage can occur if the projector is dropped.

Caution

- Ensure that the hot air from the exhaust vent is not sucked into the projector. Because even the ambient is within the operating temperature range, the hot air will cause the projector not dissipate heat well and cause the projector internal temperature too high. Make projector enter to protection mode.
- Ensure the air intake and exhaust vents are unobstructed and keep the required distance from any object. Below is required minimum distance between the vent and any object.
- All added enclosures should pass a certified thermal evaluation to ensure that the projector does not recycle exhaust air, as this may cause the projector to shut down even if the enclosure temperature is with the acceptable operation temperature range.

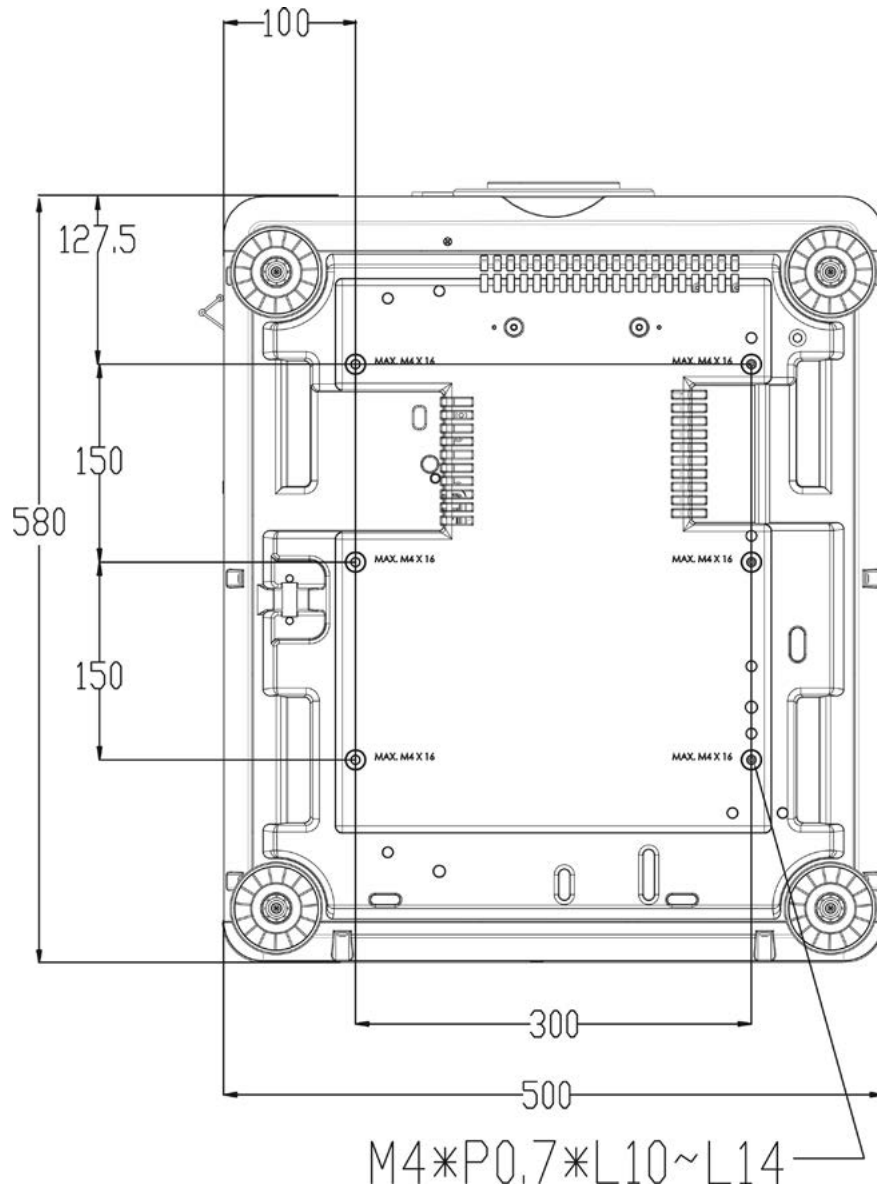


Caution

Please do not stack the projector on the surface of another projector, serious injury and damage may occur if the projector is dropped

Mounting the projector

For mounting the projector, please use UL Listed ceiling mounts and M4 screws, maximum depth of screw: 14 mm.



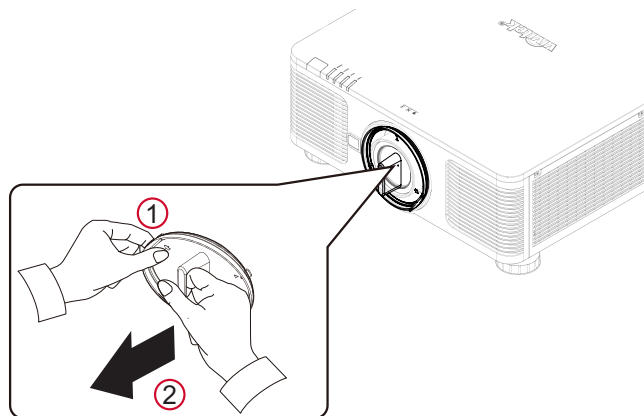
Installing or Removing the Optional Lens

Caution

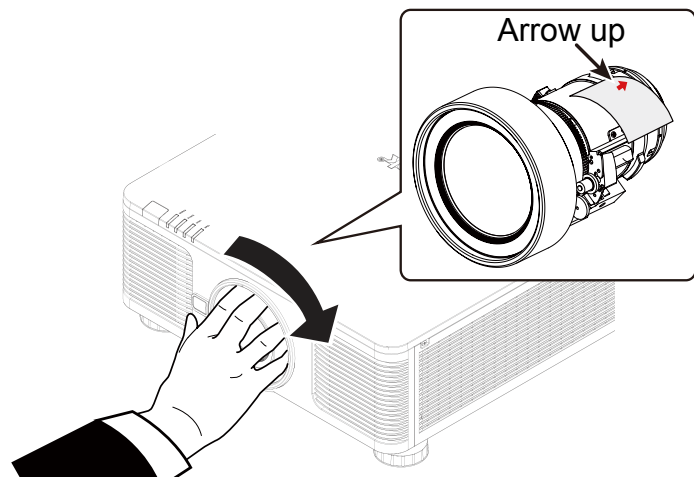
- Do not shake or place excessive pressure on the projector or the lens components as the projector and lens components contain precision parts.
- When shipping the projector with the optional lens, remove the optional lens before shipping the projector. The lens and the lens shift mechanism may encounter damage caused by improper handling during transportation.
- Before removing or installing the lens, be sure to turn off the projector and wait till the cooling fans stop, and turn off the main power switch.
- Do not touch the lens surface when removing or installing the lens.
- Keep fingerprints, dust or oil off the lens surface. Do not scratch the lens surface.
- Work on a level surface with a soft cloth under it to avoid scratching.
- If you remove and store the lens, attach the lens cap to the projector to keep off dust and dirt.

Install New Lens

1. If the Lens cover is installed, pull the edge of the lens cover with one hand (①), so that the lens cover can be removed easily with the other hand (②)



2. Align the “↑” symbol on the lens label with the “*” symbol on the top of the body (align to the center of the lens hole) and pull in the lens.



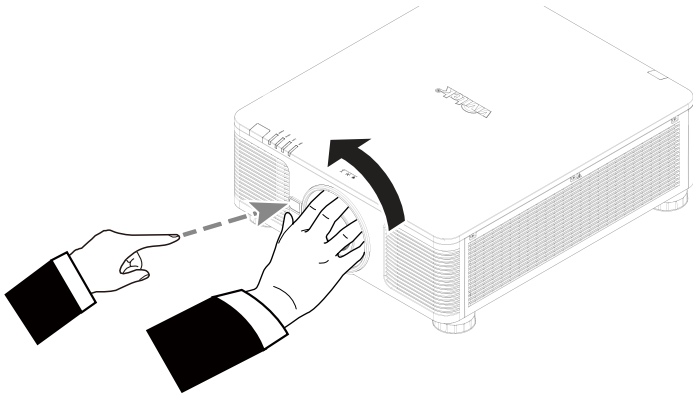
3. Make sure the lens is pushed into the holder and turn it clockwise to the “Lock” position. When turning the lens, the “Click” sounds twice to indicate that the lens is completely fixed.
4. Check if the lens is fixed successfully by pulling the lens out of the holder gently.

Note

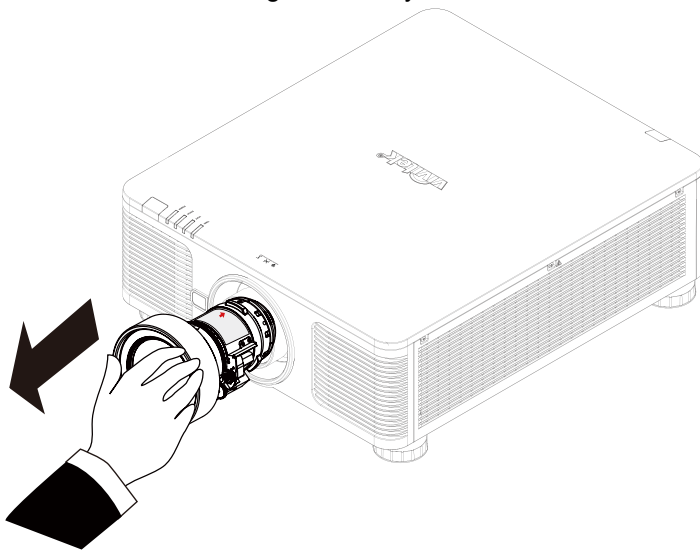
The lens memory function requires the accurate lens adjustment parameter. Please center the lens every time after the lens is mounted.

Removing the Existing Lens

1. Push the LENS RELEASE button all the way in and rotate the lens counterclockwise. The existing lens will be disengaged



2. Pull out the existing lens slowly.



Caution

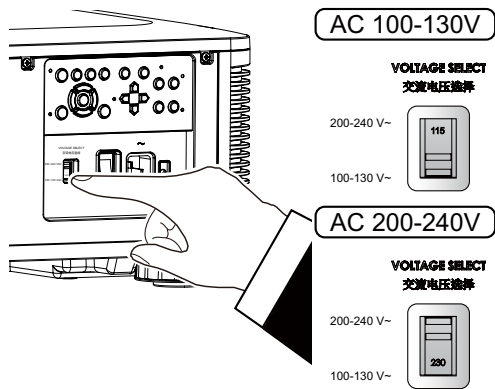
- When installing the lens into the projector, be sure to remove the lens cap from the back of the optional lens before installing the optional lens into the projector. Failure to do so will cause damage to the projector and lens.
- There is one safety switch inside the lens slot on the projector to prevent unexpected injury by laser beam, the projector cannot be turned on if the projection lens has not been installed or is not installed correctly. Please make sure the lens is installed properly before tuning on the projector.

Selecting the Input Voltage of AC Power

There is one slide switch near AC switch, please switch it to corresponding input voltage of AC power.

Please switch it to 115V if the input voltage range is 100V to 130V,

switch to 230V if input voltage range is 200V to 240V.

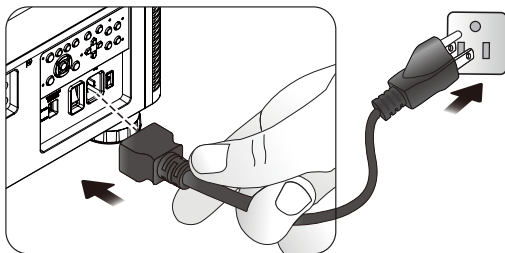


Important !

When the input voltage is 110V, the current supplied by the power supply does not provide the current required to run the projector at full power. In this case, the projector will automatically reduce the light source power to 65%, and the projector light output will also be reduced to about 65% of the nominal brightness accordingly to ensure that the projector can operate normally

Connecting to AC Power Supply

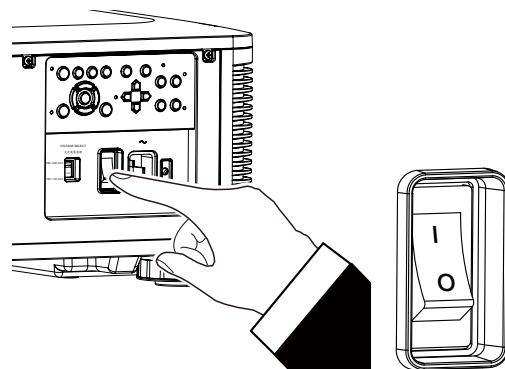
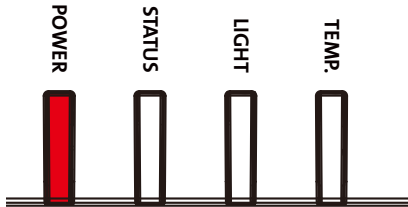
The AC power cord is included in the box; plug the power cord to the AC socket on the IO panel.



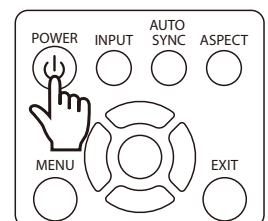
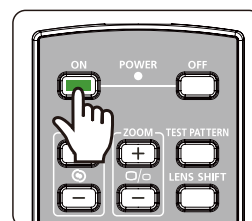
Turning on the Projector

Once the projector is correctly located and the power cable and other connections are in place, it is important that the projector is correctly powered on in order to avoid damage to components and un-necessary wear and tear. Refer to the following guide to power on the projector.

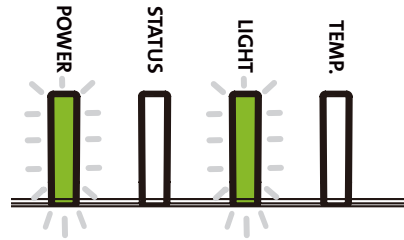
1. Press the main power switch to the on (I) position as shown. POWER LEDs flashes then lights red.



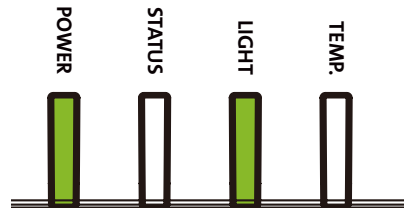
2. Press the POWER button on the control panel or ON button on the remote control.



- The Power LED and LIGHT LED flashes green till power on process is finished.



- After few seconds, both LEDs keep green, the projector is ready for use.



Turning off the Projector

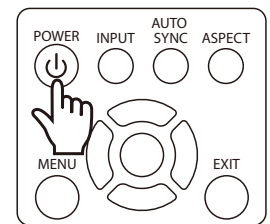
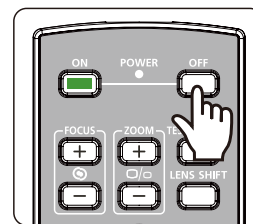
Once the projector is no longer required, it is important to shut it down correctly to avoid damage or unnecessary wear and tear to the projector.

Note

- Do not unplug the power cable from the wall outlet or projector when the projector is powered on. Doing so can cause damage to the AC IN connector of the project or the prong plug of the power cable. To turn off the AC power supply when the projector is powered on, use a power strip equipped with a switch and a breaker.
- Do not turn off the AC power supply within 10 seconds after making adjustment or changing the setting. Doing so is possible to cause loss of adjustments and settings and return to default.

Refer to the following guide to shut down the projector.

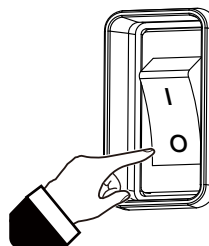
- Press the POWER button on the control panel or OFF button on the remote control once, the Power Off window displays.



- Press the POWER button again on the OSD control panel or remote control to verify power off, the power LED flashes orange after Power Off is confirmed.



- The projector enters SAVING mode when the power LED lights red.
- Press the Main Power switch to the off position (O) to turn off the projector.



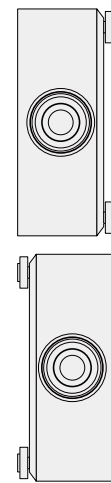
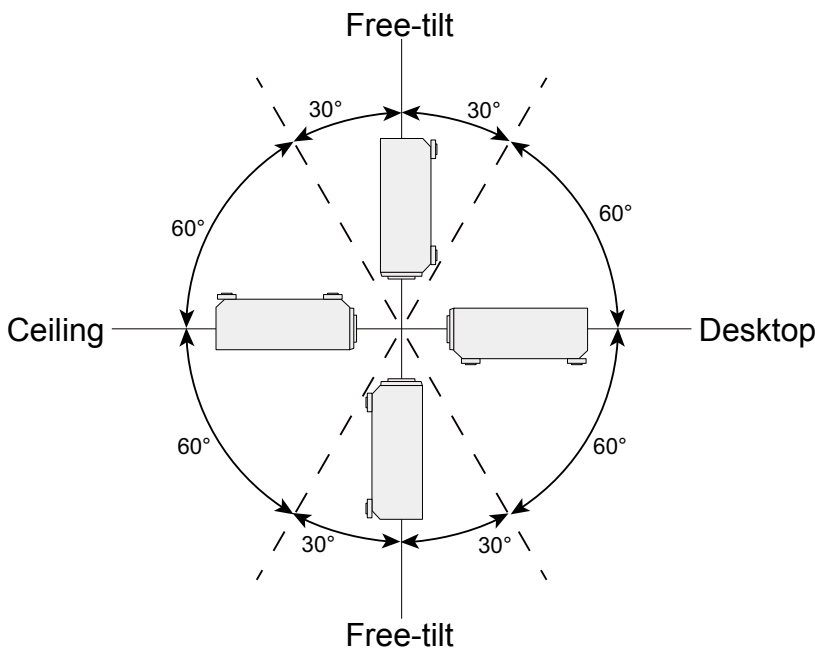
Setting up the installation condition

This projector is designed for set up in all angle including desktop, ceiling, portrait and free-tilt installation as below illustration. Please set the cooling condition according to the projector installation as below.

- Desktop** Install the projector on the table for front projection or rear projection.
- Ceiling** Mount the projector on the ceiling for front projection or rear projection
- Fre tilt** Install the projector at an angle, the angle is over $\pm 60^{\circ}$
- Portrait** Install the projector at an angle 90° to project the portrait image.
- Auto** The projector is equipped with orientation sensor; projector switches the cooling condition by detected projector orientation.

Desktop, Ceiling and Free-tilt Installation

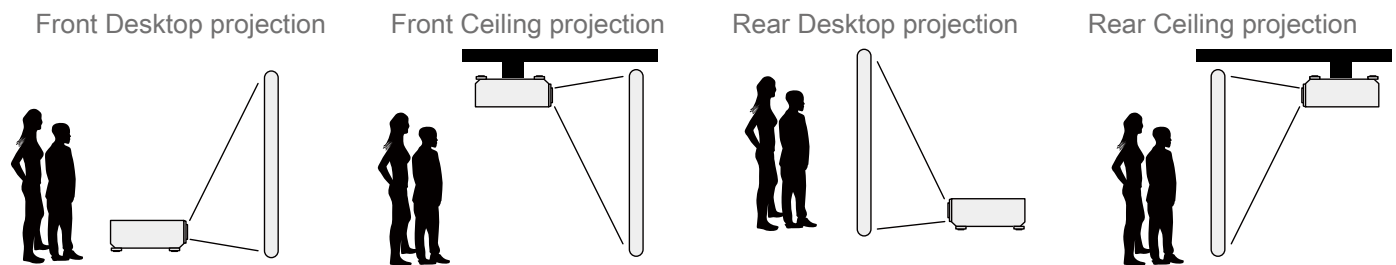
Portrait Installation



Setting up the Projection Mode

The projection mode option can be used to change the orientation of the projected image or flip the projected image.

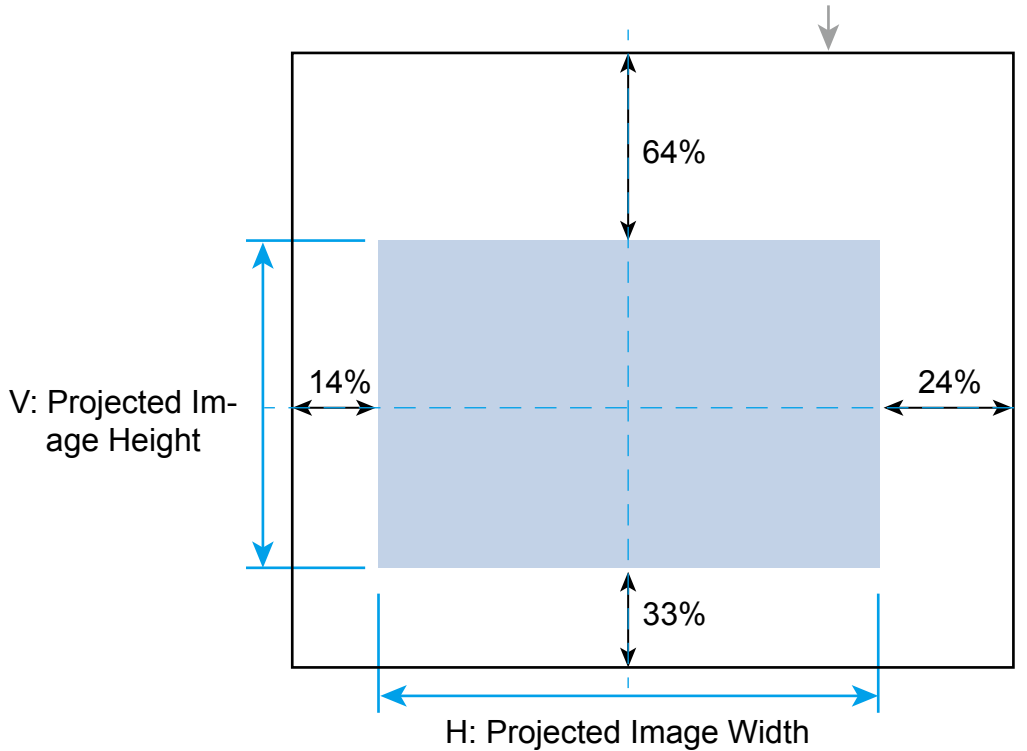
- Front Desktop** Install the projector on the table and project the image on the screen forward.
- Front Ceiling** Mount the projector on the ceiling and project the image on the screen forward, the image is overturned.
- Rear Desktop** Install the projector on the table and project the image from the rear of the screen.
- Rear Ceiling** Mount the projector on the ceiling and project the image from the rear of the screen, the image is overturned.



Adjusting Projected Image Position

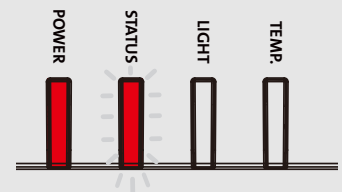
This projector has the powered lens shift feature; the image can be shifted vertically or horizontally without moving the projector. The lens shift range is shown in the percentage of the screen height and width, the maximum vertical shift range can be up to 64% of the projected image height and down to 33% of the height, and maximum horizontal shift range is 24% of the image width to right, 14% of the image width to the left. Please refer to below illustration.

The boundary of Lens shift



Note

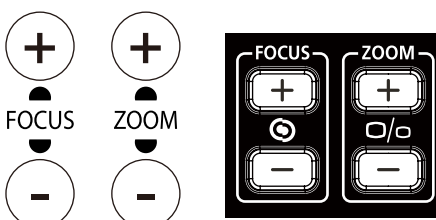
- The projector is equipped with safety switch inside the lens mount hole; the projection lens must be installed in the projector before turning on the power.
- If the projector detects no lens after the projector is turned on, the projector will enter to protection mode (POWER-lights red, STATUS-red light flashes). If this happens, turn off the projector's AC power and turn on the projector after installing the lens.
- There is a Lens Lock function on OSD menu to disable lens control adjustment for avoiding possible misoperation after you finish the adjustment, please make sure to disable the lock before performing the lens control.



Adjusting the Focus and Zoom

The focus and zoom can be adjusted from the projector control panel or remote control. Refer to the following guides to adjust the focus and zoom manually.

Press the Focus or Zoom button on the control key panel or remote control to adjust the focus or zoom effect using the increase and decrease buttons as required



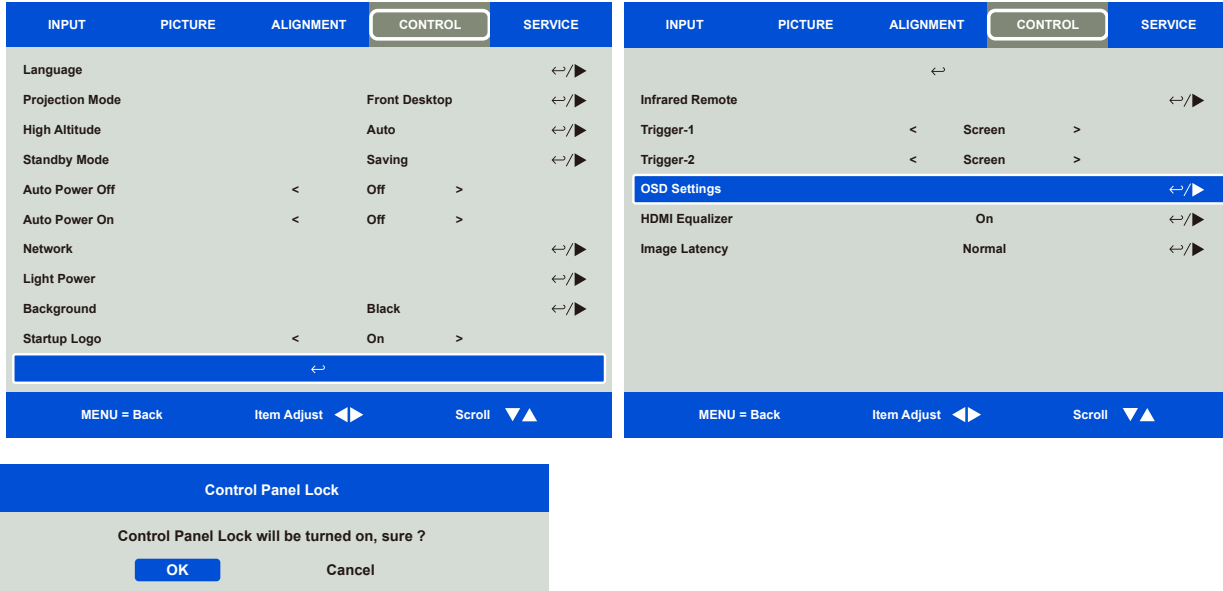
Preventing the Unauthorized Use of the Projector

Using the Control Panel Lock

This function allows you to lock control panel on the projector to prevent accidental presses by an individual or unauthorized person to control the projector.

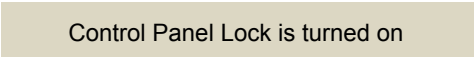
Locking the control buttons

Select CONTROL>OSD Settings>Control Panel Lock to enable the function as below illustration.



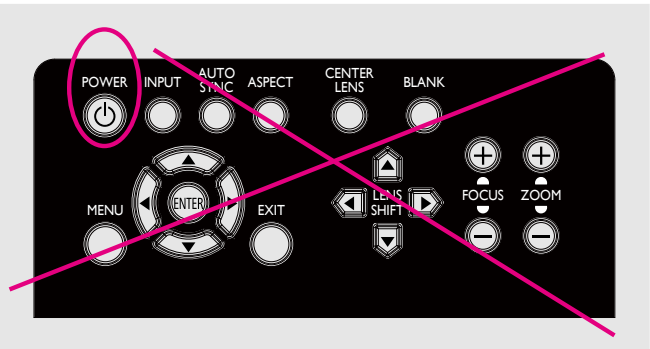
The pop-up message will be shown as above if Control Panel Lock is turned on, select OK to confirm or Cancel to ignore the setting.

Once Control Panel Lock is enabled, all of control buttons on the projector are locked. Below message is shown on the screen few seconds if any control buttons is pressed.



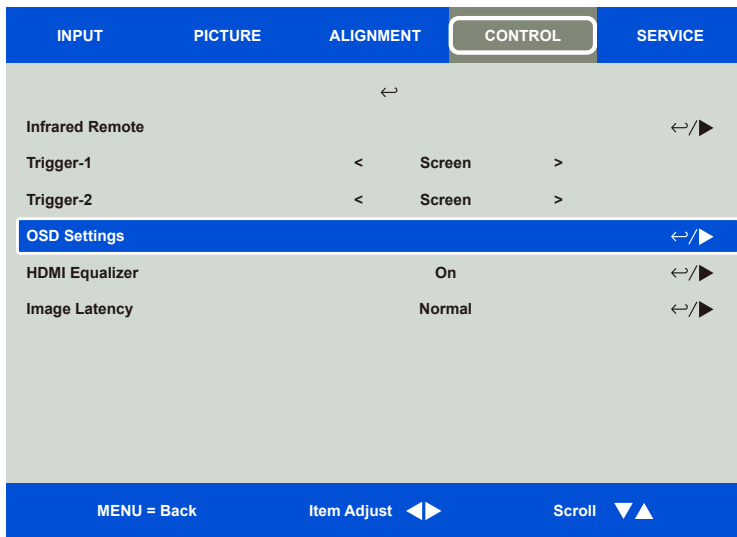
Note

When active Control Panel Lock. Only Power key will available, others will no action until control panel lock is unlock (set to Cancel). Please refer to "Unlocking the control panel on page25 "



Unlocking the control panel

Once Control Panel Lock is enabled, all of control buttons on the projector are disabled. Please enter the OSD option CONTROL>OSD Settings>Control Panel Lock then select Off to unlock the control panel by remote control.

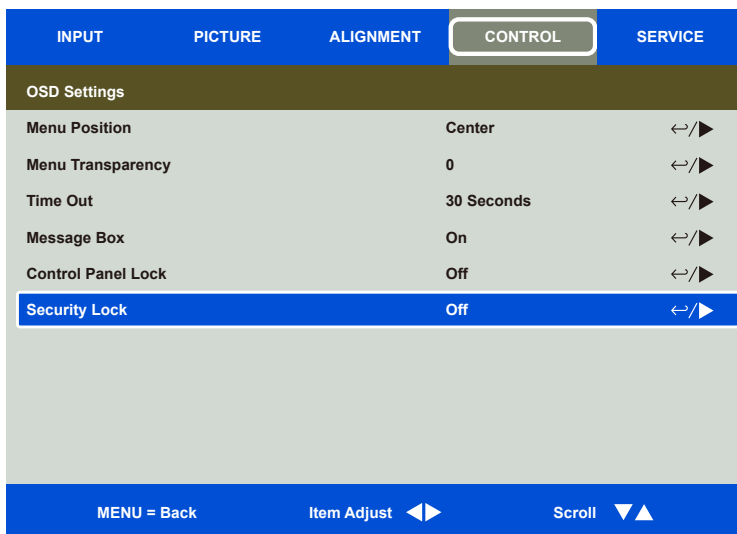


Using Security Lock

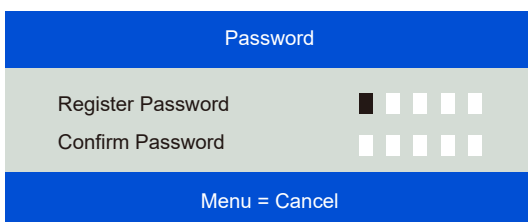
This function allows you to lock the projector for preventing the unauthorized turning on the projector; the setting is valid when you turn on the projector next time.

Enable the Security Lock

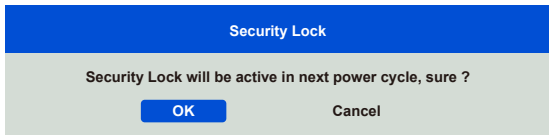
Select CONTROL>OSD Settings>Security Lock then select On to enable the function as below illustration.



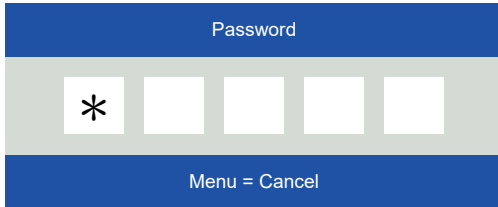
Once Security Lock is turned on, the pop-up message for setting up the password Lock as is shown as below. Press arrow buttons to set up your password, the password can be the combination of four arrow keys.



Security Lock is turned on, the pop-up message will be shown Lock as below, select OK to confirm or Cancel to ignore the setting.

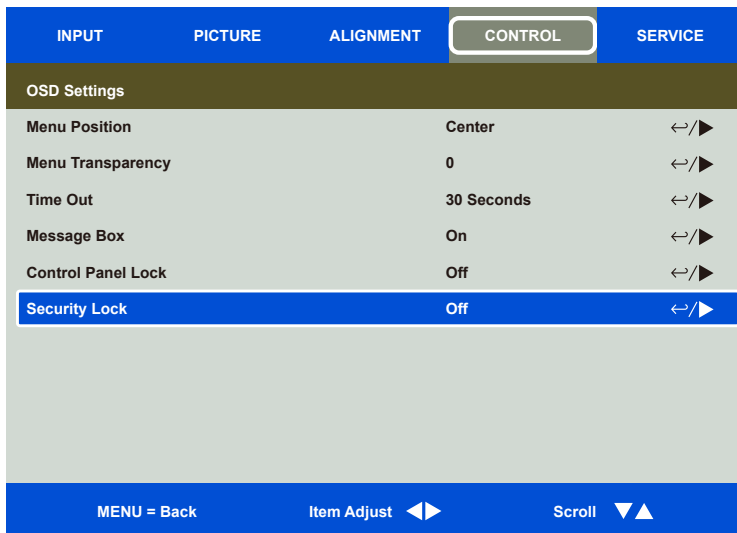


When you turn on the projector next time, the pop-up window will remind you to input the password to start the projection. The projector cannot be operated without entering the correct password.



Unlocking the projector

The projector can be unlocked from OSD menu, enter CONTROL>OSD Settings>Security Lock and select Off to disable Security Lock as below illustration.



Once Off option is selected, the pop-up window will be displayed to confirm the setting. Select OK to disable the function, otherwise select Cancel to ignore the setting.



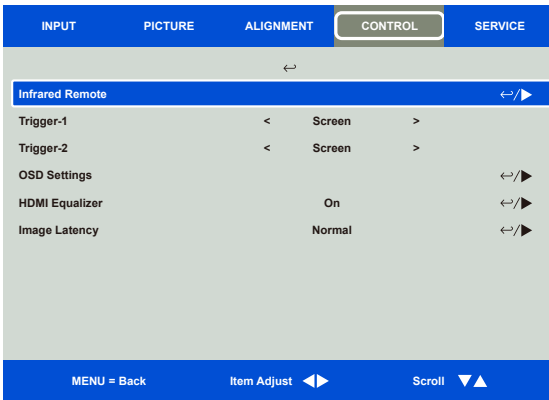
Using Control ID for Multi-projector Application

When installing more than one projector in the room, the projectors may receive the remote control signal at the same time. In this case, you can use control ID function to specify the identification of the projector and remote control to operate the specified projector. Follow below steps to set up the identification number for the projector and remote control.

Step1: Set the Projector identification number

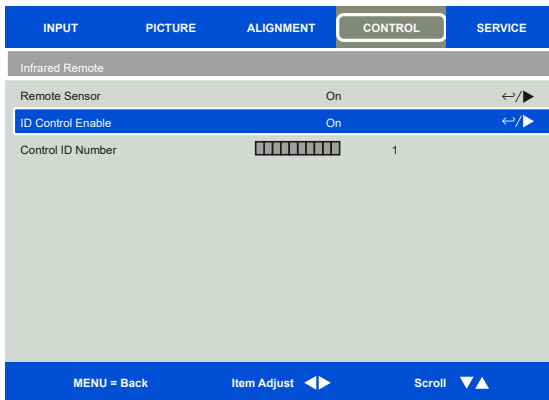
Before setting the ID control code of the infrared remote control, you need to specify its ID control code for each individual projector. You can use the control panel on the projector to set the projector's ID control code, or use RS232 network control to set its ID control code.

1. Enable Projector ID Control function from CONTROL->Infrared Remote->ID Control Enable as below figure. The message box is displayed to confirm enabling ID control after selecting ON option, please OK button to confirm or Cancel button to skip it.



Set Control ID Number

Select Control ID Number option then press Enter buttons, use ► button to increase the number or ◀ button to decrease the number to set Projector ID. This option is available when "Control ID Number" is turned on. The number range that can be set is 1-99



Step2: Set the identification number of remote control

The remote control has 2 ways to operate the projector.

- Use 1 remote control to operate 2 projector. Each remote control can record 2 ID control code. Press ID SET+MENU 5 seconds at the same time. The remote control backlight flashes 1 times then switch to the next ID control code.
- One remote control corresponds to a single projector. Assuming there are 3 projectors in the room, Then use 3 different remote control to operate each different projector.

Note

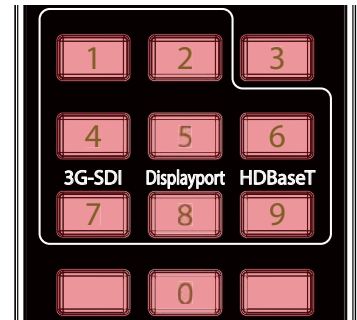
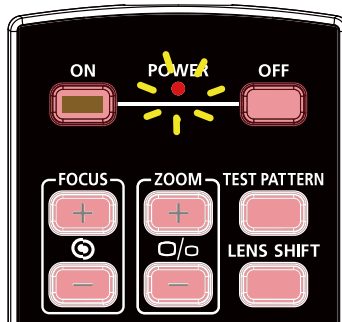
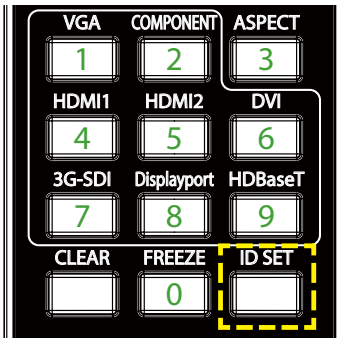
- The projector's ID control code is 1, 2, 3, ... 99.
- The ID control code of the infrared remote control is 2 digits, so 01 is equivalent to 1, 02 equivalent to 2 on the projector.

Example: When the projector's ID control code is 5, press and hold the ID SET on the remote control for about 3 seconds, the POWER LED on the remote control will start to flash. Next press the number 0 on the remote control for one second, the Power LED will light up to indicate that the setting has been successful, and then press 5 for 1 second. The Power LED of the remote control lights up again to indicate that the remote control has been successfully set 05 ID control code, at this time you can use the remote control to control the projector with the 5th ID control code.

Press and Hold ID SET for 3 Sec.

Power LED is flashing

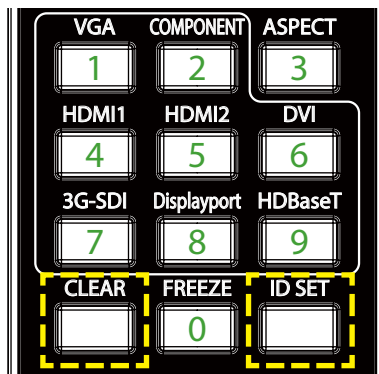
Press two digits for ID number



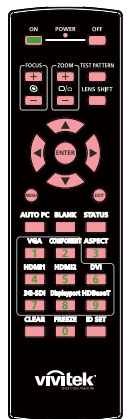
Erase the identification number of the remote control

You can directly press the ID SET to set a new ID control code. The new ID control code will overwrite the old one. You can also use the ID SET+CLEAR button on the remote control to clear the ID control code by following steps.

Press ID SET+CLEAR simultaneously for 5 seconds



The backlight of the buttons is flashing one time



Checking the identification number of the projector and remote control

The identification number of the projector and remote control can be checked by SERVICE menu as below figure, “X” represents that the function is not enabled; the number 26 is the current identification number of the remote control.

INPUT	PICTURE	ALIGNMENT	CONTROL	SERVICE
Model				DK1000Z-BK
Serial Number				W842ZIPCY0018
Software Version 1				ME08-VE08-FE03-0.0.356
Software Version 2				LD15-28-18-3120
Software Version 3				2.0.36.0-P503
Control / Remote ID			X / X	
Active Source				HDMI 2
Signal Format				1920x1080@99.6Hz
H/V Refresh Rate				112.1KHz /99.6Hz
Pixel Clock				296.90MHz

INPUT	PICTURE	ALIGNMENT	CONTROL	SERVICE
Model				DK1000Z-BK
Serial Number				W842ZIPCY0018
Software Version 1				ME08-VE08-FE03-0.0.356
Software Version 2				LD15-28-18-3120
Software Version 3				2.0.36.0-P503
Control / Remote ID			26 / 26	
Active Source				HDMI 2
Signal Format				1920x1080@99.6Hz
H/V Refresh Rate				112.1KHz /99.6Hz
Pixel Clock				296.90MHz

Note

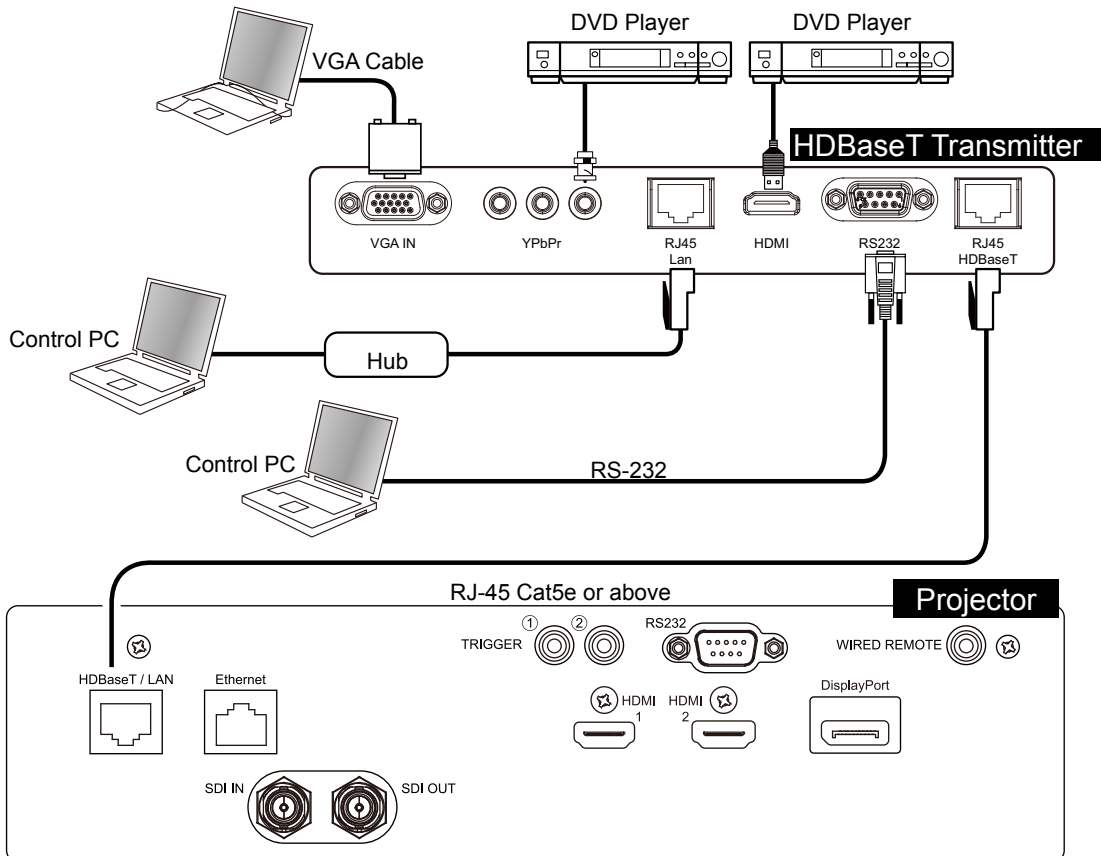
- If Projector ID Control is set to Off, projector can receive any control signal from the remote control even ID number is set into the remote control.
- When the terminal of the remote control cable is inserted to the wired control terminal of the projector, the projector will automatically switch to the wired control mode and cannot be controlled through the IR signal of the remote control. Disconnect the wired control terminal on the projector if you want to control through the IR signal of the remote control.
- If the wired remote control cable or the external IR transmitter is inserted to the incorrect port, such as Trigger, the remote control or the IR transmitter may be damaged. Make sure whether the port is correct

I/O - Connecting

HDBaseT/LAN

This projector supports network control. LAN and HDBaseT use the same port. If you only use network control, you can connect the LAN on the projector to your PC or connect via the network. Please refer to the projector's Remote Communication Manual.

Except to simply use the HDBaseT/Lan as the network control function. This projector built-in HDBaseT receiver, you can connect projector to HDBaseT transmitter (optional) to provide video, RS-232 and LAN signals via a RJ-45 cable. If your HDBaseT transmitter supports the input and output of the infrared remote control, the control signal of the infrared remote control can be transmitted to the projector via the RJ-45 cable.

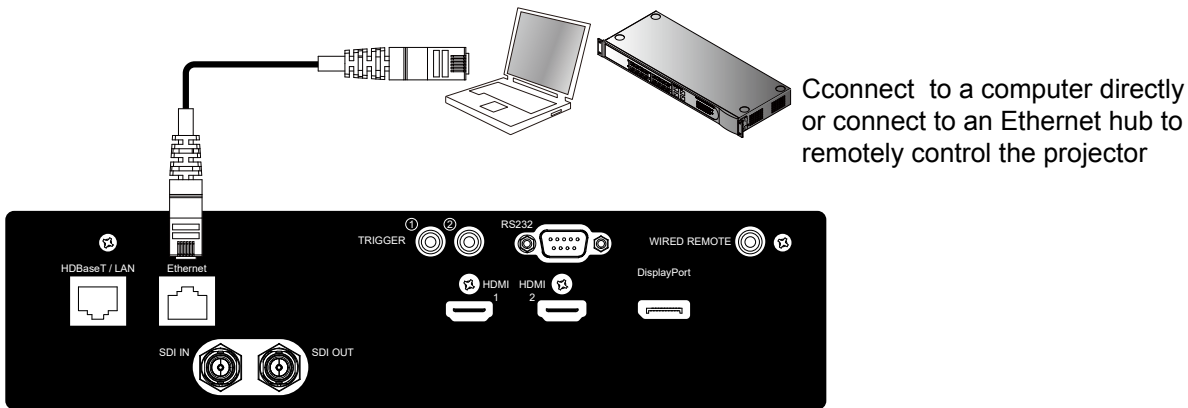


Note

- The projector supports the video signal, R-232, IR remote control and the reception of the network control signals but do not support Power over Ethernet (PoE).
- Each HDBaseT transmitters function are different. When uses the HDBaseT transmitter that only supports video playback, RS-232, infrared remote control and network control functions cannot be executed through the HDBaseT port of the projector. Users should use the HDBaseT transmitter that supports all functions to perform the rest of the functions.
- The baud rate will be switched to 9600 automatically. If RS232 command is sent via external HDBaseT transmitter.
- If the command is sent via the HDBaseT transmitter, the longest transmission distance is 100 meters. The projection may be interrupted or interfered, or the control signal cannot be sent if the transmission distance is exceeded.
- Use the RJ-45 Cat5e or above cable and avoid entwining. Entwining may cause damage or interfering signal transmission, reduce the transmission distance and degrade the image quality.

Ethernet

This port can receive network control signals or be used as a software update for the projector.

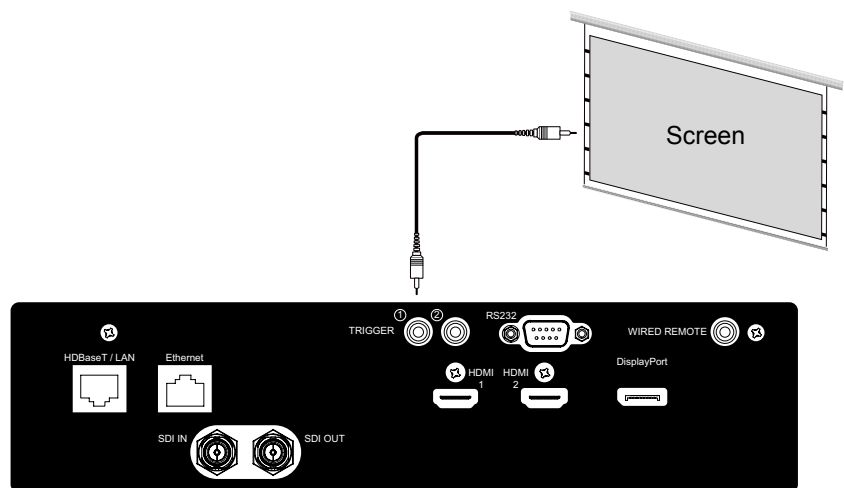


Note

- If your HDBaseT transmitter can support remote network to control the projector, the Ethernet function can also be replaced by the HDBaseT port, but the software download and update can only be done through the Ethernet port.
- Remote network control of projector and software maintenance functions can also be performed via RS-232.

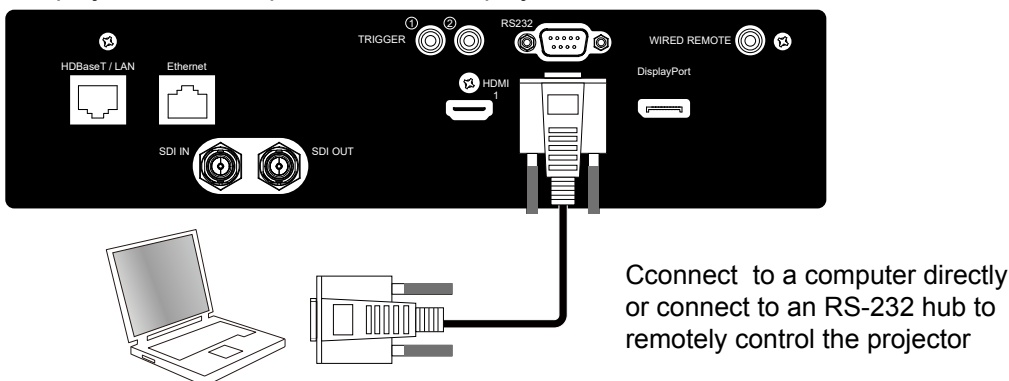
Trigger

If your projection system includes the electric projection screen or other 12V trigger device, you can connect these devices to the 12V trigger to output and configure the output 12V signal settings. The projector will output 12V signals when it's turned on. You can use the signal to control the screen or other device.



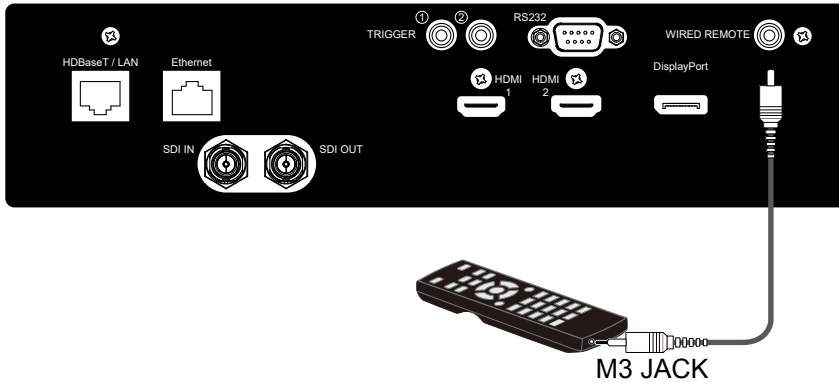
RS-232

This projector support RS-232c serial control. Use standard 9-pin D-sub interface (straight through wire) for connection projector and computer to maintain projector software.



Wired Remote

When the infrared remote control cannot directly control the projector (for example, too far away between projector and remote control or there are obstacles in the middle), users can purchase the 3.5 MM stereo universal cable that is common in the market to overcome these problems. The wire is recommended to use the double-core shielded cable within 15M. When the distance >15M or poor shielding, the remote control may not be able to operate the remote control through the cable.

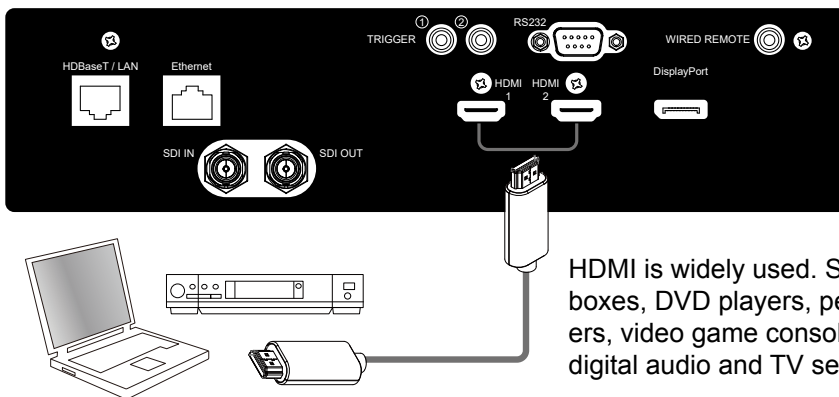


Note

The infrared remote control will not be available when use the line to connect wired remote.

HDMI 1 / 2

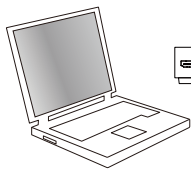
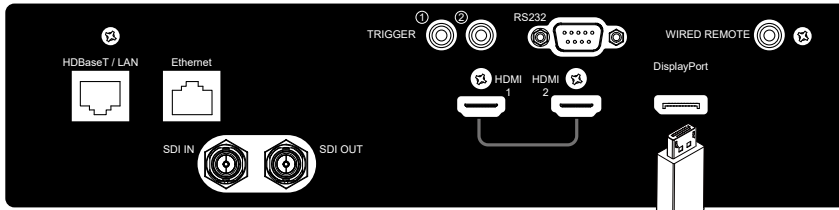
HDMI (High Definition Multimedia Interface) can transmit uncompressed audio and video signals. This projector supports HDMI version 2.1. If users use old (such as HDMI 1.3) cables, it may not be able to play the audio and video signal properly.



HDMI is widely used. Such as set-top boxes, DVD players, personal computers, video game consoles, amplifiers, digital audio and TV sets.....etc.

DisplayPort

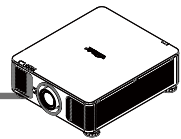
DisplayPort is a digital video interface standard with serial connection function. It can use the Hub or screen to achieve multi-screen output, and can be used alone as a video output device. This projector supports the new generation of DisplayPort signal standards. If the image cannot be played properly, please check the cable you are using meets the specified by DisplayPort ? or the DisplayPort version of the device is too old, please Update to new version and reboot machine to resolve the issue which the signal is not transmitting properly.



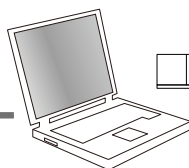
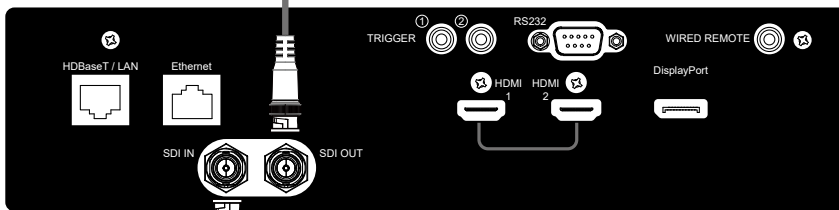
DisplayPort can be directly connected to a computer or DisplayPort Hub to connect with other devices

SDI IN / OUT

Abbreviation for Serial digital interface, this projector supports 2.97 Gb/sec (3G-SDI) and supports higher resolution image quality such as 1080P and digital cinema. Use 75 ohm coaxial cable to transmit uncompressed digital video, and the SDI connector has a locking device that is not easily dropped or poorly contacted.



Can connect to other display device which has SDI function



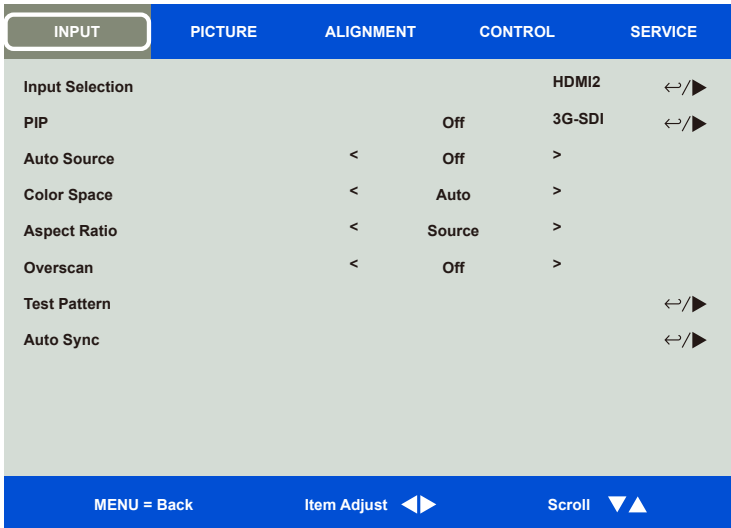
Can be connected to a computer or SDI splitter, converter, etc.

Using the projector

Using On-Screen Display

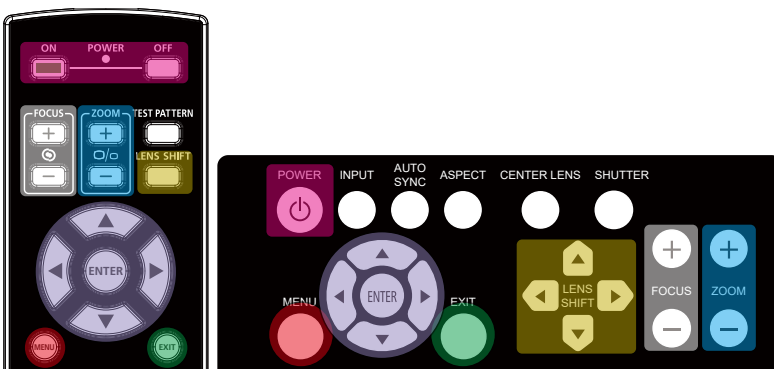
Using the OSD Menu

The projector has an On-Screen Display (OSD) that lets you make image adjustments, change various settings, check the current status of the projector, etc.

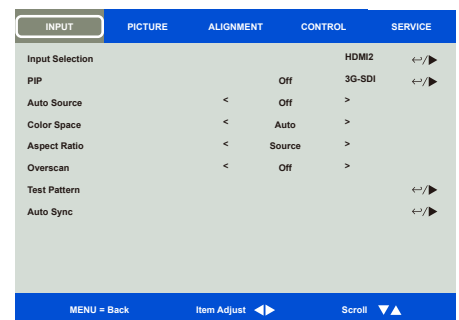


Navigating the OSD

You can use the remote control or the control buttons on the projector to navigate and make changes to the OSD. The following illustration shows the corresponding buttons on the remote control and on the projector



1. Press the **Menu** button on the projector control panel or remote control to open the OSD. There are five folders (Input, Picture, Alignment, Control, Service) on the menu. Press the cursor ◀ or ▶ buttons to move through secondary menus.



2. Press ▲ or ▼ to select menu items and ◀ or ▶ to change values for settings. Press ◀▶ to confirm the new setting.
3. Press **MENU** to leave a submenu or **EXIT** to close menu.

Menu Tree

Use the following table to quickly find a setting or determine the range for a setting.

INPUT

2nd Layer	3rd Layer	4th Layer	Selections
Input Selection			DisplayPort / HDMI1 / HDMI2 / HDBaseT / 3G-SDI
PIP	PIP Option		Off / On
	PIP Input		DisplayPort / HDMI1 / HDMI2 / HDBaseT / 3G-SDI
	Position		Top Left / Top Right / Bottom Left / Bottom Right / PBP
Auto Source			Off / On
Color Space			Auto / YPbPr / YCbCr / RGB-PC / RGB-Video
Aspect Ratio			5:4 / 4:3 / 16:10 / 16:9 / 1.88 / 2.35 / LetterBox / Source / Native
Overscan			Off / Crop / Zoom
Test Pattern			Off / Crosshatch / Color Bar / Checker Board / H Burst / V Burst / White / Red / Green / Blue / Black
Auto Sync			Execute

PICTURE

2nd Layer	3rd Layer	4th Layer	Selections
Picture Mode			High Bright / Presentation / Video
Brightness			
Contrast			
Saturation			0~200
Hue			
Sharpness			0~10
Color Temperature			5400K / 6500K / 7500K / 9300K / Native
Gamma			1.0 / 1.8 / 2.0 / 2.2 / 2.35 / 2.5 / S-Curve / HDR / DICOM
HDR			Off / Auto / PQ-400 / PQ-500 / PQ-1000 / HLG
Input Balance	Red Offset		
	Green Offset		
	Blue Offset		
	Red Gain		0~200
	Green Gain		
HSG	Blue Gain		
	Red		
	Green		
	Blue	Red Gain	
	Cyan	Green Gain	0~200
	Magenta	Blue Gain	
	Yellow		
White			
	Reset		Execute
Noise Reduction			Off / Low / Middle / High
Dynamic Black			Off / On
Light Off Timer			Disable / 0.5s / 1s / 1.5s / 2s / 3s / 4s
Smooth Picture			Off / On / Auto

ALIGNMENT

2nd Layer	3rd Layer	4th Layer	Selections	
Lens	Lens Lock		Off / On	
	Lens Control		Zoom / Focus / Shift control	
	Lens Type		non-UST Lens / UST Lens	
Lens	Lens Memory	Load Memory	Memory1 / Memory2 / Memory3 / Memory4 / Memory5 /	
		Save Memory	Memory6 / Memory7 / Memory8 / Memory9 / Memory10	
		Clear Memory		
Digital Zoom	Center Lens		Execute	
	Digital Zoom		0 ~ 100	
	Digital Pan		-1280 ~ +1280	
	Digital Scan		-720 ~ +720	
	Reset		Execute	
Blanking	Top		0 - 360	
	Bottom			
	Left		0 - 534	
	Right			
Keystone	Reset		Execute	
	Horizontal		-360 ~ + 360	
	Vertical			
	Rotation		-10 ~ 10	
4 Corners	Reset		Execute	
	Top Left Corner	Horizontal	-192 <H<192	
	Top Right Corner			
	Bottom Left Corner			
	Bottom Right Corner	Vertical	-120 <V<120	
Rotation	Reset		Execute	
	Rotation		- 100 ~ 100	
Pincushion Barrel	Reset		Execute	
	H Pin/Barrel		-150 ≤ H ≤ 300	
	V Pin/Barrel		-150 ≤ V ≤ 300	
	Keystone	Horizontal Keystone		-30 ~ + 30
		Vertical Keystone		
Rotation			-10 ~ +10	
Arc	Reset		Execute	
	Top			
	Bottom		- 150 ~ +150	
	Left			
	Right			
Edge Blend	Reset		Execute	
	Edge Blend		Off / On	
	Align Pattern			
	White Level	Top		0, 100 - 500
		Bottom		
		Left		0, 100 - 800
		Right		
	Black Level	Top		0 - 96
		Bottom		0 - 96
		Left		0 - 96
		Right		0 - 96
		All		
		Red		0 - 32
		Green		0 - 32
		Blue		0 - 32
Reset		Execute		
Screen Format		16:10 / 16:9 / 4:3		

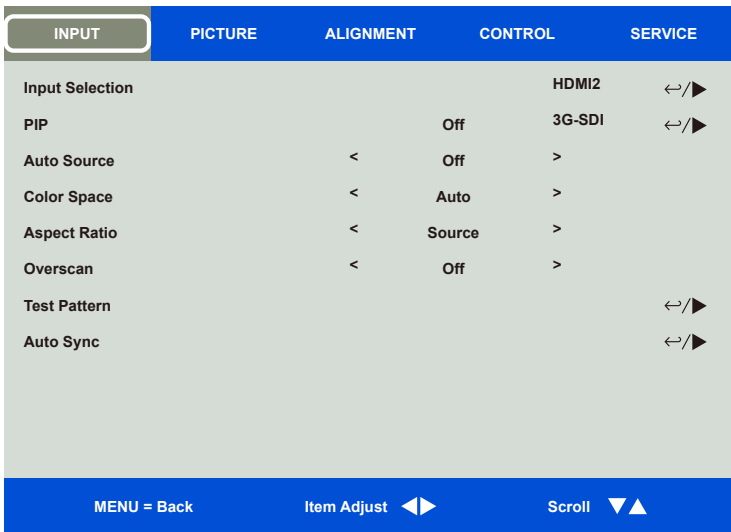
CONTROL

2nd Layer	3rd Layer	Selections
Language		English / Français / Español / Deutsch / Português / 简体中文 / 繁體中文 / 日本語 / 한국어
Projection Mode		Front Desktop / Front Ceiling / Rear Desktop / Rear Ceiling
High Altitude		On / Auto / Quiet
Standby Mode		Saving / ECO / Normal
Auto Power Off		Off / On
Auto Power On		
Network	DHCP	Off / On
	IP Address	
	Subnet Mask	
	Gateway	xxx.xxx.xxx.xxx
	DNS	
Light Power	MAC Address	
	Light Power	Eco / Normal / Custom Power Level
	Custom Power Level	20~100
Background	Constant Brightness	Off / On
	Startup Logo	Black / Blue
Infrared Remote		Off / On
	Remote Sensor	Off / On
	ID Control Enable	Off / On
Trigger-1	Control ID Number	1 ~ 99
Trigger-2		Off / Screen / 5:4 / 4:3 / 16:10 / 16:9 / 1.88 / 2.35 / LetterBox / Source / Native
OSD Settings	Menu Position	Top-Left / Top-Right / Bottom-Left / Bottom-Right / Center
	Menu Transparency	0 / 25 / 50 / 75
	Time Out	Always On / 10 Seconds / 30 Seconds / 60 Seconds
	Message Box	
	Control Panel lock	Off / On
HDMI Equalizer	Security Lock	Off / On
Image Latency		Fast / Normal

SERVICE

2nd Layer	3rd Layer	4th Layer	Selections
Model			
Serial Number			
Software Version 1			
Software Version 2			
Software Version 3			
Control / Remote ID			
Active Source			
Signal Format			
H/V Refresh Rate			
Pixel Clock			
Light Time			
Constant Brightness			
Thermal Status			
Factory Reset			

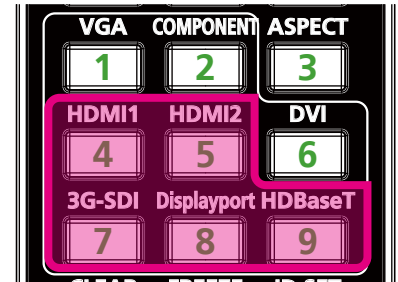
OSD Menu – INPUT



Input Selection

Use the hot key on the remote control or this function to select the input source; the Input options are as below.

The available input source of the product is DisplayPort, HDMI 1, HDMI 2, HDBaseT, and 3G-SDI.



Note

This projector not support VGA, COMPONENT, DVI. So the projector will no response if user press these hot key on remote control.

PIP

This function allows you to split the screen for displaying the images from two input sources.

PIP Option Enable PIP by choosing “ON”, and two windows will be shown on the projected picture. The larger one is the primary picture, the smaller one is the sub picture. By choosing “Off”, PIP function will be disabled, and only one picture window projected.

PIP Input Press ENTER to display available sources for the sub picture, and then select a source.

Note

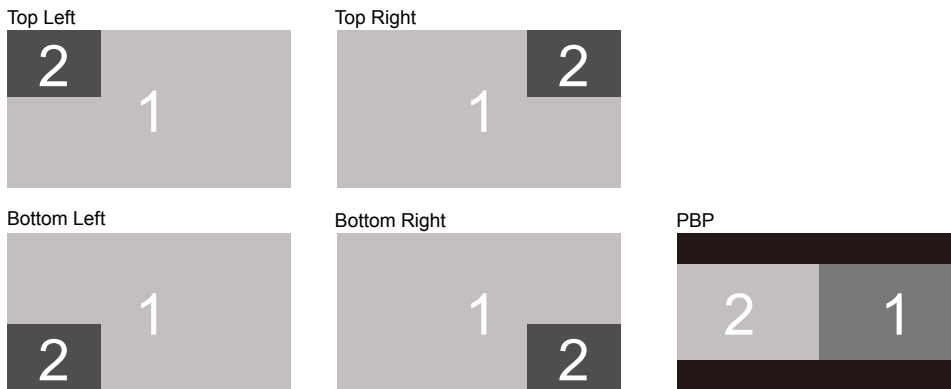
The unavailable input sources of sub-menu will be gray out and cannot be selected. The available input source of sub picture is as below combination list.

		Main Picture				
		DisplayPort	HDMI 1	HDMI 2	HDBaseT	3G-SDI
Sub Picture	DisplayPort		○	○	○	○
	HDMI 1	○				○
	HDMI 2	○				○
	HDBaseT	○				○
	3G-SDI	○	○	○	○	

Position

Set the preferred location of PIP window.

- Top Left** Display sub picture at top left of the screen.
- Bottom Left** Display sub picture at bottom left of the screen.
- Top Right:** Display sub picture at top right of the screen.
- Bottom Right** Display sub picture at bottom right of the screen.
- PBP** Display sub picture next to main picture, the main screen is shrined to the same size as sub picture.



Auto Source

The Auto Source functions “ON” lets projector automatically search for the input signal.

Color Space

This function allows you to change the corresponding color space for the input signal in most cases, the default is Auto.

- Auto** The projector detects the input signal and switches to the corresponding color space automatically.
- YPbPr** Set the color space to ITU-R BT 601.
- YCbCr** Set the color space to ITU-R BT 709.
- RGB-PC** Use the RGB color space and set the black to 0, 0, 0 RGB, while set the white to 255, 255, 255 RGB (if an 8-bit image is used).
- RGB-Video** Use the RGB color space and set the black to 16, 16, 16 RGB while set the white to 235, 235, 235 (if an 8-bit image is used) to correspond to the luminance value defined in the digital component standard.

Aspect Ratio

This function allows the user to adjust the aspect ratio of the projection image by ◀ ▶ keys.

Overscan

Noise may appear on the edge of the projected image or image may be small than projected image, select below option to hide the noise or extend the image.

- Off** Display the original image.
- Crop** Hide the edge of the image
- Zoom** Extend the image to fit the projected area as possible.

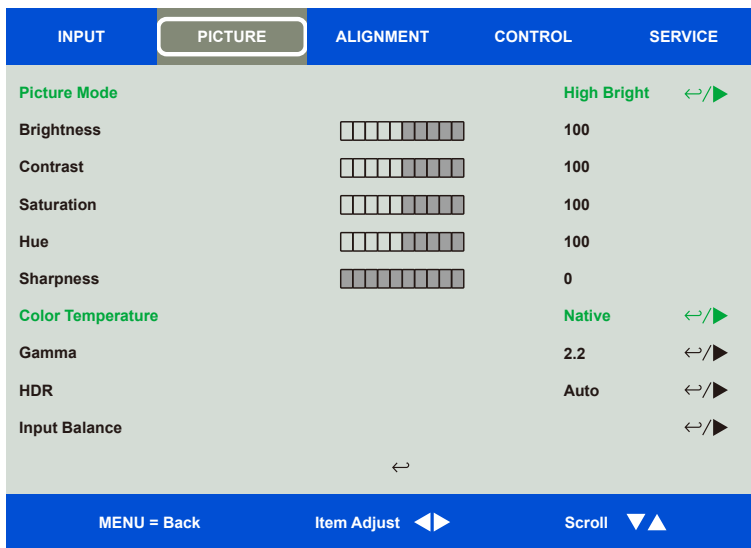
Test Pattern

The built-in images are provided for installation and adjustment. You can select Test Pattern on OSD or the TEST PATTERN hot key on the remote control to show the test pattern. Press the ◀ or ▶ to select pattern or press EXIT key again to exit the test pattern. The available test pattern options are Off / Crosshatch / Color Bar / Checker Board / H Burst / V Burst / White / Red / Green / Blue/ Black

Auto Sync

You can use this function to execute signal source auto synchronization.

OSD Menu – PICTURE



Picture Mode

Use ◀ or ▶ to select desired picture mode

- High Bright** The highest brightness output mode is suitable for the application where the highest brightness output is needed. For example: daytime - outdoor projection.
- Presentation** The best projection effect is suitable for the presentation or picture.
- Video** The mode is suitable for playing video content.

Brightness

Press ENTER, and use ◀ or ▶ to increase or decrease the level of brightness.

Contrast

Press ENTER, and use ◀ or ▶ to adjust the contrast of the projected image.

Saturation

Press ENTER, and use ◀ or ▶ to adjust the level of saturation.

Hue

Press ENTER, and use ◀ or ▶ to adjust the level of hue.

Sharpness

Press ENTER, and use ◀ or ▶ to adjust the sharpness, which changes the high-frequency details.

Color Temperature

The default of color temperature is Native, and it is suitable for most situations. As color temperature rises, the picture will appear bluer, while as the color temperature decreases, the picture will appear redder. The available options are 5400K / 6500K / 7500K / 9300K / Native,

Gamma

When the ambient light is so bright that may affect the projection of the details in the dim area of the image, you can change the gamma to adjust the chrominance. The available options are 1.0 / 1.8 / 2.0 / 2.2 / 2.35 / 2.5 / S-Curve / DICOM.

HDR

Compared with High HDR (Dynamic Range Imaging) and SDR (Standard Dynamic Range), HDR can make the bright area more brighter, Dark area more darker. The color performance will better than traditional SDR, especially the high-brightness block in the picture will have better reduction.

Must enter the Gamma option and activate the HDR function, then you can adjust HDR details options, the details adjustable options are Off / Auto / PQ-400 / PQ-500 / PQ-1000 / HLG.

Input Balance

When ambient light is too bright or changes, the projected image details may be affected, you can adjust the option to make the projected colors of image closer to desired colors. There are two options for fine tuning Red, Green and Blue

Offset These three options will shift the color spectrum for the whole image and change its brightness, if minimal amount of red, green or blue appears in the gray areas, you can adjust the offset of the corresponding color accordingly. By increasing the offset, the image brightness will become lower.

Gain These three options are used to increase or decrease the range of color input for the entire image. If minimal amount of red, green or blue appears in the gray areas, lower the gain of the corresponding color accordingly. As gain increases, the contrast of the image will become lower.

HSG

HSG is a function to adjust Hue, Saturation and Gain independently, it allows for specified color adjustments that are more intuitive. You can adjust Hue, Saturation and Gain for Red, Green, Blue, Cyan, Magenta, Yellow and white independently.

Noise Reduction

Use ◀▶ to adjust the noise of the projected image. This function is used to remove the noise of the image with interlaced scanning input. Generally, noise reduction can lower the high-frequency details and make the image softer.

Dynamic Black

This function can be used to enhance the black level of the projected image.

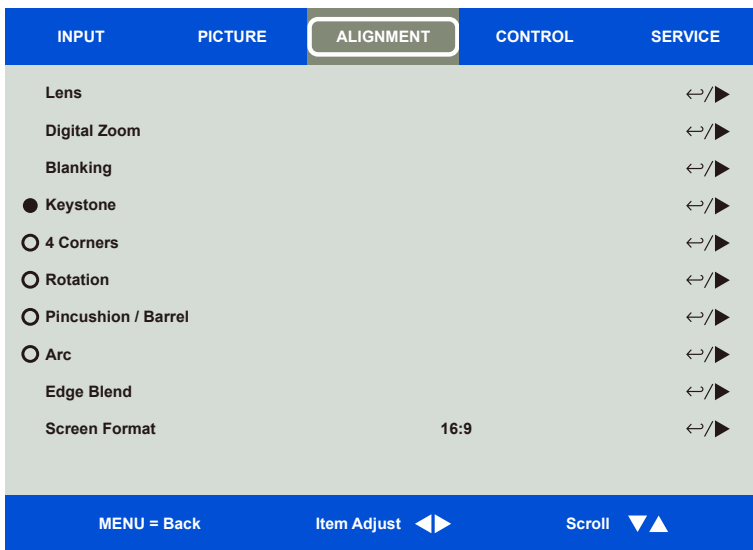
Light Off Timer

User can decide how many seconds after projector detects dark image then projector automatically turns off the laser light to get the better contrast.

Smooth Picture

If input signal is 4K, suggest to set this function "On" or "Auto" to get better projection image.

OSG Menu – ALIGNMENT



Lens

Lens Lock This function can be used to disable lens control for preventing unauthorized operation or disoperation in lens control related functions including Lens Shift, Zoom/Focus adjustment and Center Lens. Recommend to turn on Lens Lock function to disable the Lens control after lens adjustment is done.

Note:
Turning on Lens Lock will disable lens control function including Lens Shift, Center Lens and Zoom/Focus adjustment, please make sure Lens Lock is disable before you perform the lens control function.

Lens Control Select this function to open Lens Control menu for adjustment of Zoom, Focus, or Shift. You can use the ENTER button to switch the Zoom / Focus or Shift menu. Use ▲ or ▼ to adjust zoom and vertical shift of the lens, or use ◀ ▶ to adjust focus and horizontal shift of the lens.

Lens Type This projector can be used with 8 different projection lenses; the initial projection position of Ultra Short Throw (UST) Lens is different to other seven projection lenses. The projector preset two initial projection positions for these two types accordingly, Center Lens function can moves the lens to the initial position (center) automatically per the setting. Please set this option to UST Lens if Ultra Short Throw Lens is installed in the projector, otherwise please set it to non-UST Lens.

Note

There are two default positions, one is for regular zoom or fixed focus lens (Non-UST), the reference position is 0% of image width in horizontal shift and 0% of the image height in vertical shift; another one is for Ultra Short Throw Lens (UST), the default position is around 0% of image width in horizontal shift and 56% of image height in vertical shift. When performing Center Lens functions, projector will move the lens to the default position according to Lens type setting.

If Ultra Short Throw Lens is installed and UST Lens is selected, you can perform Center Lens to move Lens to initial projection position automatically.

If using Ultra Short Throw Lens and setting to Non-UST Lens, the lens will be moved to the position which is lower than the default position of Ultra Short Throw Lens after performing Center Lens function, it causes the projected image is blocked by the top cover of the projector. In this case, please perform the Lens shift function to move up the Lens till the image can be projected normally.

When using a zoom lens or a fixed-focus lens, if the lens shift range is limited and cannot be projected normally, make sure that the lens type is correctly setting as a non-UST lens, then perform the lens position centering function and then re-adjust the lens. Control and other functions to get the correct projection picture.

Lens Memory This projector supports Lens Memory function, Lens shift, Zoom and Focus memory can be stored in the projector up to 10 sets. You can load the stored memory setting to set up the lens automatically.

Load Memory: Use ▲ ▼ to select the desired memory setting then press ENTER button to execute the lens setting, the projector will adjust the Lens position, Zoom and Focus automatically.

Save Memory: Use ▲ ▼ to select the memory set for storing the setting then press ENTER button to confirm.

Clear Memory: Select the memory set to be cleared then press ENTER button to confirm clearing memory set.

Center Lens This is the lens calibration function, the projector calibrates the lens shift, focus and zoom parameters for the precise lens memory function. After performing this function, the lens will be moved to the center position as factory default setting.

Note

There are two default center positions for UST (Ultra Short Throw) Lens and non-UST Lens, make sure Lens Type setting is correct before performing this function.

If an UST lens is installed, remove the support kit of the UST lens before performing Center Lens. After all the settings of the lens control are completed, then replace the support kit to fix the UST lens.

Digital Zoom

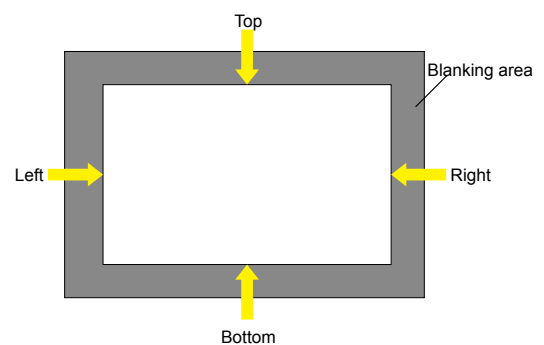
Press ENTER button to select the options to enlarge the image or shift the image.

- Digital Zoom** Press ◀▶ to enlarge the projected image or retract the enlarged projected image back to the original projected image size.
- Digital Pan** Use ◀▶ to move the projected image horizontally. This function is only available when projected image is enlarged.
- Digital Scan** Use ◀▶ to move the projected image vertically. This function is only available when projected image is enlarged.
- Reset** The setting will be reset to default value.

Blanking

This function can adjust the edges of the image and hide surplus sections of the projection.

- Top** Press ▲▼ to adjust the top blanking area on the projected picture.
- Bottom** Press ▲▼ to adjust the bottom blanking area on the projected picture.
- Left** Press ◀▶ to adjust the left blanking area on the projected picture.
- Right** Press ◀▶ to adjust the right blanking area on the projected picture.
- Reset** All the settings toward blanking will set to default.



Keystone

Press ◀▶ to correct horizontal distortion or ▲▼ to correct vertical distortion.

4 Corners

- Top Left Corner** Press ◀▶ to correct the distortion at top-left of the picture.
- Top Right Corner** Press ◀▶ to correct the distortion at top-right of the picture.
- Bottom Left Corner** Press ◀▶ to correct the distortion at bottom-left of the picture.
- Bottom Right Corner** Press ◀▶ to correct the distortion at bottom-right of the picture.
- Reset** The setting will be reset to default value.

Rotation

- Rotation** Press ◀▶ to correct incorrect angle of image.
- Reset** The setting will be reset to default value.

Pincushion / Barrel

Press ◀▶ to correct pincushion/barrel distortion.

Arc

Press ◀▶ to correct distortion of individual side including top, bottom, left or right side.

Edge Blend

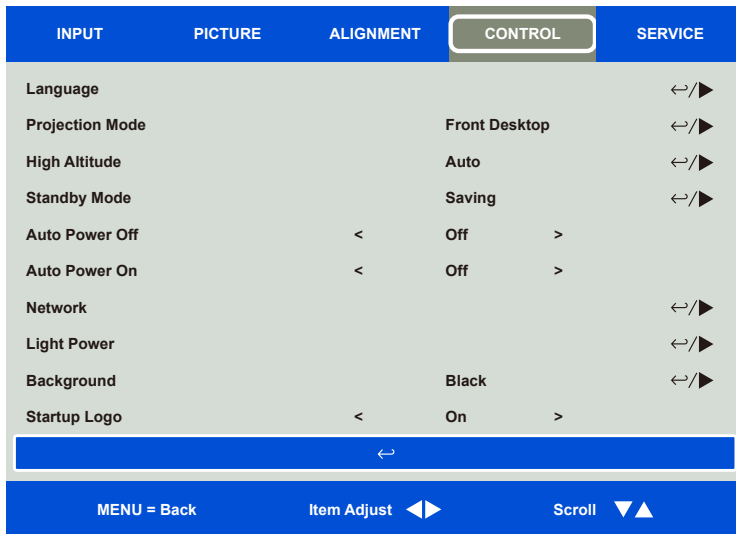
Edge Blend function requires multiple projectors to simultaneously project on the same screen. Use this function to adjust the uniformity of image. To use this function, Edge Blending must be enabled on both projectors. The functions as follows can be only adjusted when Edge Blend is turned on.

Edge Blend	If the user would like to function Edge Blend, turn this function to On.
Align Pattern	If user turns this function to On, the projector will show pattern for user to adjust the overlapping part of projection
White Level	White Level is used to set the overlapped area for blending in multi-projection application, the overlapping When projecting White, the area where the two images overlap is projected twice the projectors' white output levels. The solution is to adjust the White Level. First make sure that the units connected to the projectors are outputting black. Then increase the White Level (Top, Bottom, Left, and Right) until the non-overlap area's brightness matches the overlap area.
Black Level	The purpose of Black Level is to increase the black level of non-overlapping area. When projecting black, the area where the two images overlap projects twice the projectors' black output levels. The solution is to adjust the Black Level. First make sure that the units connected to the projectors are outputting black. Then increase the Black Level (Top, Bottom, Left, and Right) until the non-overlap area's brightness matches the overlap area.
Reset	All the settings toward edge blend will set to default.

Screen Format

Select the screen format to 16:10 / 16:9 / 4:3.

OSD Menu – CONTROL



Language

Select desired OSD language, the available languages options are English / French / Spanish / German / Portuguese / Simplified Chinese / Traditional Chinese / Japanese / Korean,

Projection Mode

The projection mode option can be used to change the orientation of the projected image or flip the projected image.

- Front Desktop** Install the projector on the table and project the image on the screen forward.
- Front Ceiling** Mount the projector on the ceiling and project the image on the screen forward, the image is overturned.
- Rear Desktop** Install the projector on the table and project the image from the rear of the screen.
- Rear Ceiling** Mount the projector on the ceiling and project the image from the rear of the screen, the image is overturned.

High Altitude

Use this function to adjust the cooling fan of the projector to get well cooling if the projector is installed in an area over 5000 feet. The projector is equipped with altitude sensor which is capable of detecting atmosphere pressure for estimating altitude. The default value is Auto. It can adjust automatically to corresponding setting based on estimated altitude.

- On** Turn on High Altitude mode if the projector is installed in an area over 5000 feet. The projector fan runs at full speed and has louder sound, but the heat dissipation is optimal.
- Auto** Set up this mode automatically by estimated altitude and keep the brightness unchanged.
- Quiet** Whether you choose On or Auto, if you feel the fan sound is too noisy, you can choose this mode to reduce the fan speed and lower the noise. But, when this mode is selected, the projector will reduce the brightness to avoid excessive internal temperature.

Note:

- Estimate Altitude is calculated by atmosphere pressure, it may have the tolerance comparing to actual altitude.
- The fan runs speed of quiet mode is based on the projector is operate at the sea level's speed, but the machine will still senses the internal temperature to automatically increase or decrease the fan speed.
- In some application, regular cooling fan setting may not supply enough cold air for system cooling even the projector is installed in an area under 5000 feet. In this case, please set High Altitude to On.

Standby Mode

Saving	standby power consumption less than 0.5W, Ethernet control function is not workable.
ECO	standby power consumption less than 3.0W, Ethernet control function is workable but HDBaseT is not available.
Normal	standby power consumption less than 6.0W; HDBaseT only can work at this condition.

Note

No matter which mode selected. The keypad on projector, RS-232 and infrared remote control can be used.

Auto Power Off

This function is set to OFF by default. When it is set to ON and no input signal is received within 20 minutes, the projector will turn off automatically.

Auto Power On

This function is set to OFF by default. When it is set to ON, the projector will turn on automatically when y AC power is turned on next time (press the power switch on the projector to turn it on automatically, instead of using the remote control or the machine keypad button). Set this function to OFF if it's unnecessary.

Network

Use this function to configurator the network settings so that you can control the projector via the network.

Press ▲ ▼ and Enter button to select Network and network settings. Please refer to Remote Communication Manual for further information.

DHCP	Set DHCP to ON/OFF. When DHCP is set to ON, the DHCP server of the domain will assign an IP address to the projector. The IP address will appear on the IP address window without need to make any input. If the domain cannot assign any IP address, 0.0.0.0 will be shown on the IP address window.
IP Address	To specify an IP address, press the Enter button to show the IP address input window. Use the ◀▶ button to select the number in the address to change. Use the ▲ ▼ button to increase or decrease the number in the IP address. Network IP Address 172. xxx. xxx. xxx.
Subnet Mask	Set the subnet mask. The input method is the same as the setting for IP address.
Gateway	Set the gateway. The input method is the same as the setting for IP address.
DNS	Set the DNS. The input method is the same as the setting for IP address.
MAC Address	Show projector's MAC Address.

Light Power

Use ◀ ▶ button to select the power save mode (Eco), normal (Normal) or custom power level.

Light Power	<p>ECO : Projection operates in the energy-saving mode, which is equivalent to 80 % power of light source.</p> <p>Normal : Projection operating with normal light power can obtain the brightest projection display.</p> <p>Custom Power Level : User can decide the power level depending on his or her preference.</p>
Customer Power Level	Press arrow key to adjust the power level by user. This function will active when Light power select Customer Power Level.
Constant Brightness	If select On, when the laser luminance decrease by duration of usage. The projector will add the power level automatically for getting the constant brightness. However, if power level is set to the highest brightness, this function will not achieve significant improvement.

Background

User can use this function to specify the image displayed on the blank screen when there is no input signal. The selectable items are Black and Blue, the default setting is Black.

Startup Logo

Press ENTER button, and use the ◀ ▶ function to turn on / off the Startup Logo.

Infrared Remote

Remote Sensor	The default is On. However, there are three conditions that will be suggested to turn off "Remote Sensor"; the possible condition is that if the user uses wired remote control, he can set this function to Off, or that if the projector IR location is exposed to the bright sunlight or fluorescence, or that projector control is not controlled by remote. If the user would like to reset to On, user can only set by OSD panel or RS-232.
ID Control Enable	This option allows you to enable the projector ID control function. You can turn on this function and give an ID number for the projector, then set the same ID number for the remote control to match the projector ID. After ID code is set, you can control the specified projector by the remote control.
Control ID Number	Select the option then press ◀ or ▶ to set the ID number of the projector, this option is selectable when Projector ID Control is enabled.

Trigger

The projector is provided with a set of trigger output. User can connect the trigger to the screen with projector by the cable. If user does so, once the projector is powered, the screen would be automatically turned on as well. There is a 2-3 second delay to activate this function. The selectable aspect ratios are as follows:

Off	Turn off screen trigger
Screen	Outputs 12V of power on Trigger for whichever aspect ratio
5:4	Outputs 12V of power on Trigger when Aspect Ratio is set to 5:4
4:3	Outputs 12V of power on Trigger when Aspect Ratio is set to 4:3.
16:10	Outputs 12V of power on Trigger when Aspect Ratio is set to 16:10.
16:9	Outputs 12V of power on Trigger when Aspect Ratio is set to 16:9.
1.88	Outputs 12V of power on Trigger when Aspect Ratio is set to 1.88.
2.35	Outputs 12V of power on Trigger when Aspect Ratio is set to 2.35.
Letterbox	Outputs 12V of power on Trigger when Aspect Ratio is set to Letterbox.
Source	Outputs 12V of power on Trigger when Aspect Ratio is set to Source
Native	Outputs 12V of power on Trigger when Aspect Ratio is set to Native.

OSD Settings

Menu Position	Adjust menu position through this function, the available position options are at Top-Left, Top-Right, Bottom-Left, Bottom-Right and center of the screen.
Menu Transparency	Change the transparency of OSD Menu, the background color of the OSD can be adjusted from darker to lighter if you want to display complete projected image.
Time Out	Set up the timer to exit OSD menu, the available options are Always On, 10 Seconds, 30 Seconds and 60 Seconds.
Message Box	This function allows you to disable the pop-up message at bottom-right of the screen.
Control Panel Lock	Avoids someone accidentally pressing the control panel on the machine, causing the projector's various settings to be changed incorrectly. Refer to " page 24 ,Using the Control Panel Lock " for detail message.
Security Lock	Avoids unauthorized personnel to operate the projector. Refer to " page 25 ,Using Security Lock " for detail message.

HDMI Equalizer

Sometimes the projector can't get the HDMI input signal (Such as transmission attenuation caused by the transmission distance or other question) . User can set this function On to Reload HDMI signal to get the projection image.

Image Latency

Projector default is **Normal**. If the input image is simulated , gaming, such as Electric, Aircraft simulation, Military training....etc. User can set this function **Fast** to get the quick response projection screen. Because the projector will simplify the image processing to reduce image frame delay. But if user feel the fast image latency make the image quality too bad. User can set it to normal to retrieve the better image quality.

OSD Menu – SERVICE

INPUT	PICTURE	ALIGNMENT	CONTROL	SERVICE
Model				DK1000Z-BK
Serial Number				W842ZIPCY0018
Software Version 1				ME08-VE08-FE03-0.0.356
Software Version 2				LD15-28-18-3120
Software Version 3				2.0.36.0-P503
Control / Remote ID			X / X	
Active Source				HDMI 2
Signal Format				1920x1080@99.6Hz
H/V Refresh Rate				112.1KHz /99.6Hz
Pixel Clock				296.90MHz

←

MENU = Back Item Adjust ◀▶ Scroll ▼▲

Model

Display the project model name.

Serial Number

Display the serial number of the projector.

Software Version 1 / Software Version 2 / Software Version 3

Display the software version in the projector.

Control/Remote ID

Display current projector ID and remote control ID number.

Active Source

Display the current input source information.

Signal Format

Display current input source format

H/V Refresh Rate

Display horizontal and vertical refresh rate of the current picture.

Pixel Clock

Display pixel clock of the current input signal.

Light Time

Display accumulated usage of projection light source

Constant Brightness

Display the constant brightness this function is active or not..

Thermal Status

Display current of the thermal management components.

Factory Reset

The user can use this function to reset all the settings to factory default; light time.

Additional Information

Product Specification

Display Type	Single Chip 0.66" DLP Technology	
Brightness ***	10000 Lumen	
Native Resolution	4K-UHD(3840 x 2160) with Smooth Picture On	
Maximum Resolution	4K-UHD(3840 x 2160) @ 60Hz	
Contrast Ratio	6000:1 (Typ. @ DB On (Full On, Full Off)	
Illumination Type	Laser Phosphor	
Throw Ratio*	1.73 - 2.27:1 (Option)	
Image Size (Diagonal)*	40" - 500"	
Projection Distance*	1.45 - 24.85m (4.77ft to 81.52ft)	
Projection Lens*	F = 1.7 - 1.9, f = 26 - 34mm	
Zoom Ratio*	1.3x	
Aspect Ratio	16:9	
Offset	Motorized Lens Shift	
Keystone Correction	Horizontal $\pm 60^\circ$, Vertical $\pm 40^\circ$ (adjustable range of single direction)	
Horizontal Frequency	15, 30 – 90Hz	
Vertical Scan Rate	50 - 85Hz	
Edge Blending	Yes (Built-In)	
Warping	Yes (Built-In)	
Adjustable Lens Shift Range	Vertical: -33% to +64%, Horizontal: -14% to 24%	
I/O Connection Ports	DisplayPort x1, HDMI v2.0 (x2), 3G-SDI-In/Out, RS-232, 12V Trigger, Wired Remote, HDBaseT™, RJ45. Refer to " page 11 ,IO Panel "	
Projection Method	Table Top, Ceiling Mount (Front or Rear), Free-tilt , Portrait	
Security Solutions	Kensington® Security Slot, Security Bar, Anti-Theft Lens Screw	
Dimensions (WxDxH)	500 x 580 x 205mm (19.7" x 22.8" x 8.1")	
Weight	30.6kg (67.5lbs)	
Available Colours	Black	
Noise Level	43dB (Normal Mode)	
Power Supply	AC 100-130V, 50/60Hz AC 200-240V, 50/60Hz	
Power Consumption	Normal Mode	1100W max@110Vac / 1350W max@220Vac
	Saving Power On	Less than 0.5W
	Standby Power Off (Eco)	Less than 3W
Operation Condition	At temperature 5 to 40°C, relative humidity 10% to 85%, non-condensation	
Storage Condition	At temperature -10 to 60°C, relative humidity 5% to 95%, non-condensation	
Standard Accessories	Refer to " page 8 ,Packing Checklist "	
Optional Accessories	Interchangeable Lens Options	

* Note: Standard Lens

** Note: Lens shift compatibility with all lenses except D88-WF18501 Wide Fixed Lens and D88-UST01B Ultra-Short Throw Lens.

*** Note: Brightness specifications are in compliance with ISO 21118 standards.

Supported Signal Input Timing

2D formats

Signal Format	Resolution	Frame Rate (Hz)	Display Port	HDMI 1/2 / HDBaseT				HD/SDI/3G See page "SDI Format"	Output Frame Rate (Hz)
				RGB	YUV (8-bit)	YUV (10-bit)	YUV (12-bit)		
PC	640 x 480	59.94	X	X					60
	640 x 480	74.99	X	X					60
	640 x 480	85	X	X					60
	800 x 600	60.32	X	X					60
	800 x 600	75	X	X					60
	800 x 600	85.06	X	X					60
	848 x 480	47.95	X	X					4K mode: 60 2K mode: 48
	848 x 480	59.94	X	X					60
	1024 x 768	60	X	X					60
	1024 x 768	75	X	X					60
	1024 x 768	85	X	X					60
	1280 x 720	47.95	X	X					4K mode: 60 2K mode: 48
	1280 x 768	60	X	X					60
	1280 x 800	60	X	X					60
	1280 x 960	60	X	X					60
	1280 x 1024	60.02	X	X					60
	1280 x 1024	75.02	X	X					60
	1280 x 1024	85.02	X	X					60
	1366 x 768	60	X	X					60
	1440 x 900	60	X	X					60
	1400 x 1050	60	X	X					60
	1600 x 1200	60	X	X					60
	1680 x 1050	59.94	X	X					60
	1920 x 1080	47.95	X	X					4K mode: 60 2K mode: 48
	1920 x 1200 RB	50	X	X					50
	1920 x 1200 RB	60	X	X					60
	1920 x 1080	100	X	X *4					50
	1920 x 1080	120	X	X *4					60
	1920 x 1200 RB	100	X	X *4					50
	1920 x 1200 RB	120	X	X *4					60
1600x1200	120	X	X *4					60	
2560 x 1600	100	X	X *4					50	
2560 x 1600	120	X	X *4					60	
2712 x 1528	50	X	X					50	
2712 x 1528	60	X	X					60	
Apple Mac	640 x 480	66.59	X	X				60	
	832 x 624	74.54	X	X				60	
SDTV	480i	59.94						60	
	1440x480i	60		X	X	X	X	60	
	1440x576i	50		X	X	X	X	50	
EDTV	576i	50						50	
	480p	59.94	X	X	X	X	X	60	
	576p	50	X	X	X	X	X	50	

Signal Format	Resolution	Frame Rate (Hz)	Display Port	HDMI 1/2 / HDBaseT				HD/SDI/3G See page "SDI Format"	Output Frame Rate (Hz)
				RGB	YUV (8-bit)	YUV (10-bit)	YUV (12-bit)		
HDTV	1035i	60	X	X	X	X	X		60
	1080i	50	X	X	X	X	X		50
	1080i	59.94	X	X	X	X	X		60
	1080i	60	X	X	X	X	X		60
	720p	50	X	X	X	X	X		60
	720p	59.94	X	X	X	X	X		60
	720p	60	X	X	X	X	X		60
	1080p	23.98	X	X	X	X	X		4K mode: 60 2K mode: 48
	1080p	24	X	X	X	X	X		4K mode: 60 2K mode: 48
	1080p	25	X	X	X	X	X		60
	1080p	29.97	X	X	X	X	X		60
	1080p	30	X	X	X	X	X		60
	1080p	50	X	X	X	X	X		50
	1080p	59.94	X	X	X	X	X		60
	1080p	60	X	X	X	X	X		60
	2K (2048x1080)	24	X	X	X	X	X		4K mode: 60 2K mode: 48
	2K (2048x1080)	25	X	X	X	X	X		50
	2K (2048x1080)	30	X	X	X	X	X		60
	2K (2048x1080)	50	X	X	X	X	X		50
	2K (2048x1080)	60	X	X	X	X	X		60
	4K-UHD (3840x2160)	24	X	X	X	X*1	X*1		4K mode: 60 2K mode: 48
	4K-UHD (3840x2160)	25	X	X	X	X*1	X*1		50
	4K-UHD (3840x2160)	30	X	X	X	X*1	X*1		60
	4K-UHD (3840x2160)	50	X	X	X(8 Bits)	X*2	X*3	X*3	50
4K-UHD (3840x2160)	60	X	X	X(8 Bits)	X*2	X*3	X*3	60	

*1 HDBaseT supports 4K 24/25/30Hz 4:2:2 only
 *2 HDBaseT supports 4K 50/60Hz 4:2:0 only
 *3 HDMI 1,2 support up to 4:2:2, HDBaseT does not support
 *4 HDMI 1,2 support but HDBaseT does not support

3G-SDI Format

Timing	SDI Link mode	Signal Standards	Color Encode	Sampling Structure	Bit Depth	Remark
NTSC	SD	SMPTE 259M-C 270Mbps SD	YCbCr	4:2:2	10	128M
PAL	SD	SMPTE 259M-C 270Mbps SD	YCbCr	4:2:2	10	128M
1035i60	HD	SMPTE 292M 1.5Gbps HD	YCbCr	4:2:2	10	128M
1080i59	HD	SMPTE 292M 1.5Gbps HD	YCbCr	4:2:2	10	128M
1080i60	HD	SMPTE 292M 1.5Gbps HD	YCbCr	4:2:2	10	128M
1080P30	HD	SMPTE 292M 1.5Gbps HD	YCbCr	4:2:2	10	128M
1080P25	HD	SMPTE 292M 1.5Gbps HD	YCbCr	4:2:2	10	128M
1080i50	HD	SMPTE 292M 1.5Gbps HD	YCbCr	4:2:2	10	128M
1080P24	HD	SMPTE 292M 1.5Gbps HD	YCbCr	4:2:2	10	128M
720P60	HD	SMPTE 292M 1.5Gbps HD	YCbCr	4:2:2	10	128M
720P50	HD	SMPTE 292M 1.5Gbps HD	YCbCr	4:2:2	10	128M
1080Sf25	HD	SMPTE 292M 1.5Gbps HD	YCbCr	4:2:2	10	128M
1080Sf30	HD	SMPTE 292M 1.5Gbps HD	YCbCr	4:2:2	10	128M
1080P50	3G Level A	SMPTE 424M 3Gbps	YCbCr	4:2:2	10	128M
1080P59	3G Level A	SMPTE 424M 3Gbps	YCbCr	4:2:2	10	128M
1080P60	3G Level A	SMPTE 424M 3Gbps	YCbCr	4:2:2	10	128M
1080P50	3G Level B	SMPTE 424M 3Gbps	YCbCr	4:2:2	10	128M
1080P59	3G Level B	SMPTE 424M 3Gbps	YCbCr	4:2:2	10	128M
1080P60	3G Level B	SMPTE 424M 3Gbps	YCbCr	4:2:2	10	128M

SDI i/f equalizer

Test Cable: Belden 1694A

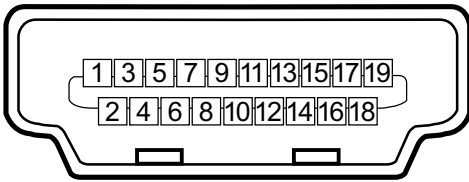
3G-SDI reach 150m

HD-SDI reach 230m

SD-SDI reach 480m

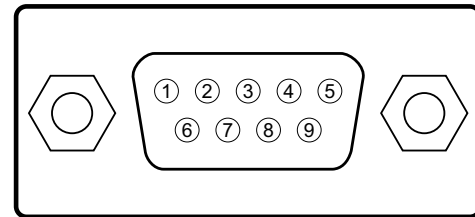
Configurations of Terminals

HDMI(19 pin Type A)



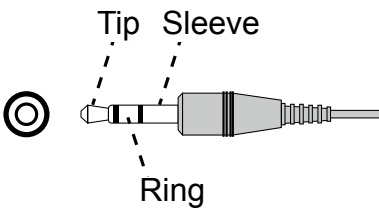
1	T.M.D.S. Data 2+ Input	11	Ground
2	Ground	12	T.M.D.S. Clock C- Input
3	T.M.D.S. Data 2- Input	13	CEC
4	T.M.D.S. Data 1+ Input	14	N.C
5	Ground	15	SCL
6	T.M.D.S. Data 1- Input	16	SDA
7	T.M.D.S. Data 0+ Input	17	Ground
8	Ground	18	P5V
9	T.M.D.S. Data 0- Input	19	HPD
10	T.M.D.S. Clock C+ Input		

Serial Control Terminal (RS-232, D-sub 9 pin)



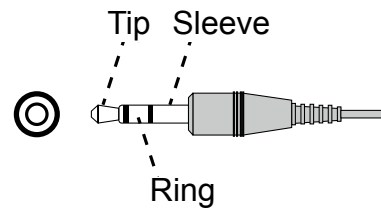
	Serial
1	N.C
2	RXD
3	TXD
4	N.C
5	Ground
6	N.C
7	Short with pin8
8	Short with pin7
9	N.C

Screen Trigger



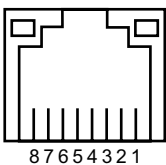
1	Tip	VCC(12V)
2	Sleeve-	Ground
3	Ring	Signal

Wired Remote



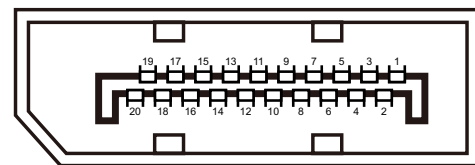
1	Tip	VCC(3.3V)
2	Sleeve-	Ground
3	Ring	Signal

HDBaseT/LAN Terminal



1	TX+
2	TX-
3	TXC
4	Ground
5	Ground
6	RXC
7	RX+
8	RX-

DisplayPort



Pin 1	ML_Lane 0 (p)	Pin 11	GND
Pin 2	GND	Pin 12	ML_Lane 3 (n)
Pin 3	ML_Lane 0 (n)	Pin 13	CONFIG1
Pin 4	ML_Lane 1 (p)	Pin 14	CONFIG2
Pin 5	GND	Pin 15	AUX CH (p)
Pin 6	ML_Lane 1 (n)	Pin 16	GND
Pin 7	ML_Lane 2 (p)	Pin 17	AUX CH (n)
Pin 8	GND	Pin 18	Hot plug
Pin 9	ML_Lane 2 (n)	Pin 19	Return
Pin 10	ML_Lane 3 (p)	Pin 20	DP_PWR

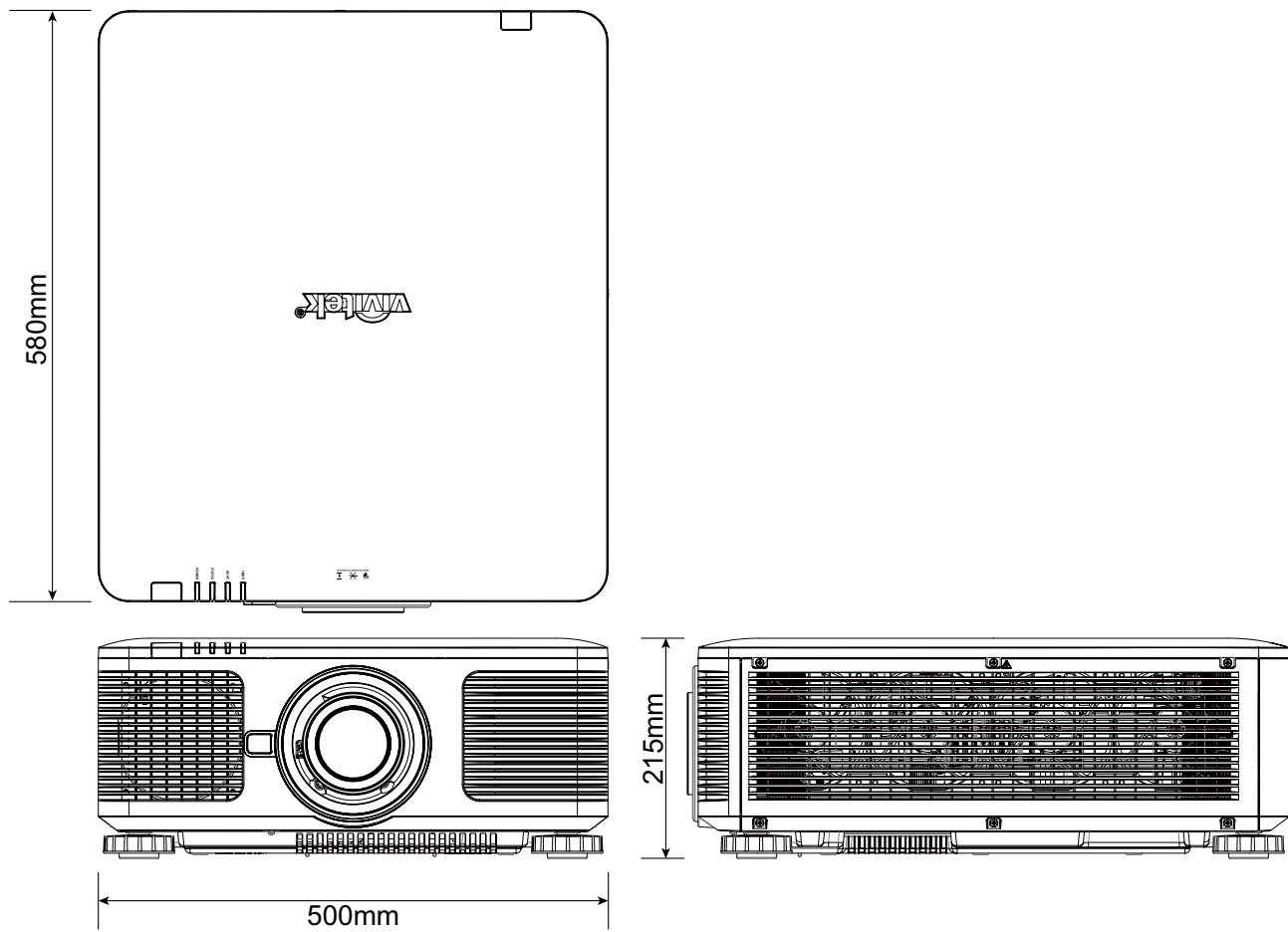
Lens Series

Eight types of optional electric lenses are available for the projector as below table. Contact the authorized dealer of Vivitek for details.

Part Number	Lens Name	F Number	Focal Length	Zoom Ratio	Screen Size	Throw Ratio
D88-UST01B	Ultra Short Throw	2.0	5.64mm	---	100"-350"	0.377:1
D88-UWZ01	Ultra Wide Zoom	1.96-2.3	11.3-14.1mm	1.25:1	40"-500"	0.75-0.94:1
D88-WF18501	Wide Fix	1.85	11.6mm	---	40"-500"	0.76:1
D88-WZ01	Wide Zoom	1.85-2.5	18.7-26.5mm	1.41:1	40"-500"	1.26-1.79:1
D88-ST001	Standard Lens	1.7-1.9	26-34mm	1.3:1	40"-500"	1.73-2.27:1
D88-SMLZ01	Semi Long Zoom	1.86-2.48	32.9-54.2mm	1.65:1	40"-500"	2.22-3.69:1
D88-LOZ101	Long Zoom 1	1.85-2.41	52.8-79.1mm	1.5:1	40"-500"	3.58-5.40:1
D88-LOZ201	Long Zoom 2	1.85-2.48	78.5-121.9mm	1.55:1	40"-500"	5.34-8.36:1

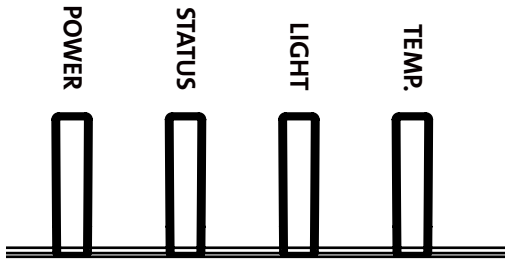
- The best performance of above zoom lenses is within vertical shift 0-50%, horizontal shift $\pm 10\%$, the projector may support to wider adjustable shift range for flexibility in installation.
- D88-WF18501 and D88-UST01 are fixed lens, the vertical and horizontal shift range of the projection lenses are 0%, the corners of the projected image may appear shadows or distortion if lens is shifted horizontally or vertically.
- For best projection performance, support kits for D88-UST01B lens is required, please refer to the installation manual of D88-UST01B for the details.

Product Dimensions



LED Indication

Several indicators messages are used to display the current projector status or alert the abnormal message.



Power LED

LED Display		Projector status	Procedure
Off		AC Power is turned off	
Flashing	Green	Projector is turning on.	wait till projector start displaying
	Orange	Projector is under cooling	wait until cooling finish (~ 10 seconds)
On	Red	Standby mode	
	Green	Projector is on	

Status LED

LED Display		Projector status	Procedure
Off		Normal status	
Flashing	Red (Cycles of 1)	Cover is opened.	Check if the top cabinet is installed properly.
	Red (Cycles of 4)	Cooling fan error	Contact with your nearest authorized dealer or service center.
On	Red	System Error	Contact with your nearest authorized dealer or service center.

Light Source LED

LED Display		Projector status	Procedure
Off		Light source is off	
Flashing	Green	Projector is turning on.	
	Red (Cycles of 6)	Light source lit fail	Contact with your nearest authorized dealer or service center.
On	Red	Light source is end-of-life	Contact with your nearest authorized dealer or service center.
	Green	Light source is on	

Temp LED

LED Display		Projector status	Procedure
Off		Normal status	
Flashing	Red	Over temperature error	Contact with your nearest authorized dealer or service center.

Common Problems and Solutions

These guidelines provide tips to deal with problems you may encounter while using the projector. If the problem remains unsolved, contact your dealer for assistance.

Often the problem is something as simple as a loose connection. Check the following before proceeding to the problem-specific solutions.

- Use some other electrical device to confirm that the electrical outlet is working.
- Ensure the projector is turned on.
- Ensure all connections are securely attached.
- Ensure the attached device is turned on.
- Ensure a connected PC is not in suspending mode.
- Ensure a connected notebook computer is configured for an external display. (This is usually done by pressing an Fn-key combination on the notebook.)

Tips for Troubleshooting

- In each problem-specific section, try the steps in the order suggested. This may help you to solve the problem more quickly.
- Try to pinpoint the problem to avoid replacing non-defective parts.
- For example, if you replace batteries and the problem remains, put the original batteries back and go to the next step.
- Keep a record of the steps you take when troubleshooting: The information may be useful when calling for technical support or for passing on to service personnel.

Image Problems

Problem: No image appears on the screen

1. Verify the settings on your notebook or desktop PC.
2. Turn off all equipment and power up again in the correct order.
3. Check if shutter is enabled.

Problem: The image is blurred

1. Adjust the Focus on the projector.
2. Performance Auto Sync on the remote control or projector.
3. Ensure the projection distance is within the specified range.
4. Check that if the projection lens is clean.

Problem: The image is wider at the top or bottom (trapezoid effect)

1. Position the projector so it is as perpendicular to the screen as possible.
2. Use the Keystone function to correct the problem.

Problem: The image is reversed or upside down

Check the Projection Mode setting on the CONTROL->Projection Mode menu.

Problem: The image is streaked

1. Set the Total dots (H Total) and VGA Setup settings on the INPUT menu of the OSD to the default settings.
2. To ensure the problem is not caused by a connected PC's video card, connect to another computer.

Problem: The image is flat with no contrast

1. Adjust the Contrast setting on the PICTURE menu of the OSD.
2. Adjust the Brightness setting on the PICTURE menu of the OSD.

Problem: The color of the projected image does not match the source image.

Adjust the Color temperature and Gamma settings on the PICTURE menu of the OSD

Projection Problems

Problem: There is no light from the projector

1. Check that the power cable is securely connected.
2. Ensure the power source is good by testing with another electrical device.
3. Restart the projector in the correct order and check that the Power LED is green.
4. Check if Blank or Shutter function is enabled

Remote Control Problems

Problem: The projector does not respond to the remote control.

1. Direct the remote control towards remote sensor on the projector.
2. Ensure the path between remote and sensor is not obstructed.
3. Check the remote sensor on OSD is turned on. Refer to "Infrared Remote on page49 "
4. Ensure remote control wire is not plugged in the projector.
5. Turn off any fluorescent lights in the room.
6. Check the battery polarity.
7. Replace the batteries.
8. Turn off other Infrared-enabled devices in the vicinity.
9. Have the remote control serviced.
10. Ensure that the remote control code conforms to the projector's code if universal remote control is used.
11. Check if Projector ID control is enabled and the ID number is correct. Refer to "Using Control ID for Multi-projector Application on page27 "

Projection Lens Problems

Problem: The Zoom or Focus adjustment cannot work.

1. Check if the lens is installed properly, improper lens installation may cause to lens cannot work normally. Please follow the lens installation procedure to check again.
2. Check if Lens Lock function is enabled, locking the lens will disable all of lens adjustment functions. Refer to "Lens on page43 "
3. Perform Center Lens function to calibrate the Lens again.
4. Replace the other lens to check the problem if the lens is available.
5. Contact with service center for the details.

Remote communication Problems

Problem: The projector does not respond to Ethernet control

1. Make sure Network Standby is turned on, the communication path is interrupted if it's turned off(less 0.5W). Refer to "Projection Mode on page47 ".
2. Check the network configuration in your laptop and projector; refer to Remote Communication manual for more information.

Having the Projector Serviced

If you are unable to solve the problem, you should have the projector serviced. Pack the projector in the original carton. Include a description of the problem and a checklist of the steps you took when trying to fix the problem. The information may be useful to the service personnel. Return the projector to the place you purchased it.

About the Vivitek Support

If you cannot find solutions from this user guideline, please contact us using the contact information below:

North America

Vivitek Service Center
15700 Don Julian Road, Suite B
City of Industry, CA. 91745
U.S.A

Tel: 855-885-2378 (Toll-Free)
Email: T.services1@vivitekcorp.com
URL: www.vivitekusa.com

Europe and Africa

Vivitek Service & Support
Zandsteen 15
2132 MZ Hoofddorp
The Netherlands

Tel: +31 20 655 0960
Email: support@vivitek.eu
URL: www.vivitek.eu

China

Vivitek Service Center
201209, Room 1802, 18/F,
Cimic Tower, No.1090,
Century Avenue,
Pudong, Shanghai

Tel: 400-888-3526 (Toll-Free)
Tel: 021-58360088-142 (Direct)
Email: service@vivitek.com.cn
URL: www.vivitek.com.cn

Asia and Taiwan

VIVITEK after-sales service
Vivitek Corporation, Co., Ltd.
4F., No.186, Ruiguang Rd.,
Neihu Dist., Taipei City 11491

TEL: 86-28-797-2088
FAX: 86-26-600-2358
E-mail: kenny.chang@vivitek.com.tw
URL: www.vivitek.com.tw